



Winter 2017 Draft Report

Alignment Proposals for the Inyo National Forest and the Town of Mammoth Lakes

Map ID #S08

April 11, 2017





**Map ID #S08 Key Agreements
As of April 11, 2017**

A. Alignment: This trail is intended to create a non-motorized “stacked-loop” or “nested” trail system from the Sherwins Trailhead (see SHARP Map ID #S01 &W01), along the base of the Sherwins to the Tamarack Street Trailhead (see SHARP Map ID #S02) and back to the Sherwins Trailhead.

- 1. Trailhead and Destination(s):** Borrow Pit Staging Area (SHARP Map ID #S01), the Tamarack Street Trailhead (SHARP Map ID #S02), the Sherwins Meadow Path (SHARP Map ID #S07), and the Meadow Connector Trail (SHARP Map ID #S18).
- 2. Naming:** Sherwins Meadow Loop & Hidden Lake Connector
- 3. Control Points/Narrative:** The intersection between SHARP #S18 and an existing use-trail marks the beginning of SHARP ID #S08 (1). Follow SHARP ID #S08 west for 615 feet to the start of the “Sherwins Meadow Loop” (2) which encompasses the longest loop around the meadow (5,742 feet). The user has the option to continue travelling west (clockwise around the loop) or north (counterclockwise) around the loop. Continuing to travel the loop clockwise (west) after 883 feet the trail crosses Bodle Ditch (3) which will require a formalized bridge crossing. The trail continues west for 1,252 feet until it intersects with the “Hidden Lake Connector Trail” (4). Users that would like to follow a shorter loop may turn right at this intersection and follow the Hidden “Lake Connector Trail” 1,683 feet until it meets the larger “Sherwins Meadow Loop” and intersects with SHARP ID #S07(5). From the previous intersection at control point 4, the user can also continue straight at this intersection following an existing use-trail west for 1,583 feet where the trail enters the Enchanted Forest (6). There may be historic/interpretive opportunities related to the historic dairy and geologic history in this area which will require further study and collaboration. The trail continues through the Enchanted Forest following an existing use-trail and continues for 1,454 feet until it meets with the Hidden Lake Connector Trail and SHARP ID #S07 (5). Users can complete the Sherwins Meadow Loop by travelling east on SHARP ID #S07 for 1,357 feet to the intersection between SHARP ID #S07 and the eastside of SHARP ID #S08’s “Sherwins Meadow Loop” (7). Users may continue straight at the intersection at control point 7 and return to the Sherwins Trailhead by following the SHARP ID #S07 alignment or the longer route following SHARP #S18.
- 4. Map Reference:** SHARP TTC: Map ID #S08, 03/15/17



B. Design Specifications:

1. **Trail Type:** Type 2 (Preferred Mountain Bike)
2. **Users:** Non-motorized
3. **Width:** Tread narrow – less than 36”
4. **Grade:** Grades may occasionally be steeper than 8%
5. **Surface:** Native materials
6. **Features:** The primary feature is to provide a non-motorized “stacked-loop” trail system that offers multiple routes and surface options to a variety of summer users.
7. **User Experience/Aesthetics:** This trail is intended to be a non-motorized trail connecting: SHARP MAP ID #S01, SHARP MAP ID #S02, SHARP MAP ID #S07, and SHARP Map ID #S18.
8. **Trail Amenities:** Wayfinding and interpretive signage, dog bag stations, and benches as appropriate.

C. Winter/Summer Interface: SHARP ID #W09a winter project follows a similar alignment as the proposed SHARP ID #S08 project. Summer signage should be placed with consideration for potential winter recreation uses and grooming equipment specifications. There is also a potential need to attach orange stakes to all Type 9a Trail Directional signage in this area for snowmobile safety.

D. Signage and Wayfinding Special Considerations: As directed by the *Mammoth Lakes Trail System Wayfinding and Signage Standards Manual*. Additionally, there is a possible opportunity to implement interpretive signage related to the variety of natural features in the area and could connect with the larger interpretive experience at the Borrow Pit Staging Area (SHARP Map ID #S01).

TO BE COMPLETED BY AGENCIES/JURISDICTIONS

- A. Environmental Review:** “SHARP Projects – NEPA” as submitted to USFS.
- B. Construction & Maintenance:** Town of Mammoth Lakes under CCS and potentially SUP.
- C. Funding Considerations & Ownership:** Funding construction through Measure R and MLTS Trail Facilities Construction Reserve Account; ownership via USFS with maintenance provided by the MLTS.



D. Construction Cost Estimator:

Total Linear Feet New Trail Construction	5,020 feet
Total Estimated Cost per Linear Foot	\$5.00
Total Estimated Cost of New Trail Construction	\$25,100
Type of Amenities	Signage
# of Amenities	8
Cost per Amenity	\$200
Total Cost of Amenities	\$1,600
Rehabilitation Cost	TBD
Total Cost Estimate for SHARP ID #S08	\$26,700








- a. **Total Linear Feet of New Trail Construction:** 5,020 feet
- b. **Total Estimated Cost per Linear Foot:** \$5.00 per linear foot.
- c. **Estimated Cost of Amenities:** \$200 for each Type 9a sign.
- d. **Rehabilitation Cost Estimate:** TBD
- e. **First-Guess Cost Estimate:** \$26,700
 - i. **Preferred Alignment:** \$26,700
 - ii. **Alternative Alignment:** TBD

E. Other Special Considerations: Mammoth Community Water District's need for access to Hidden Lake will be considered and coordinated with during the design process.

SHARP TTC: Map ID #08

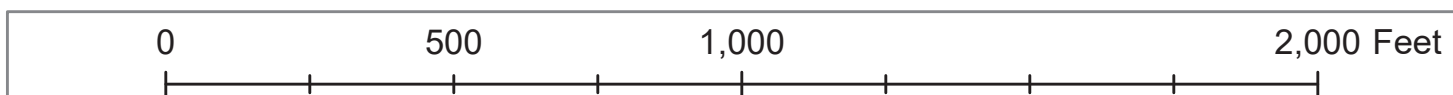
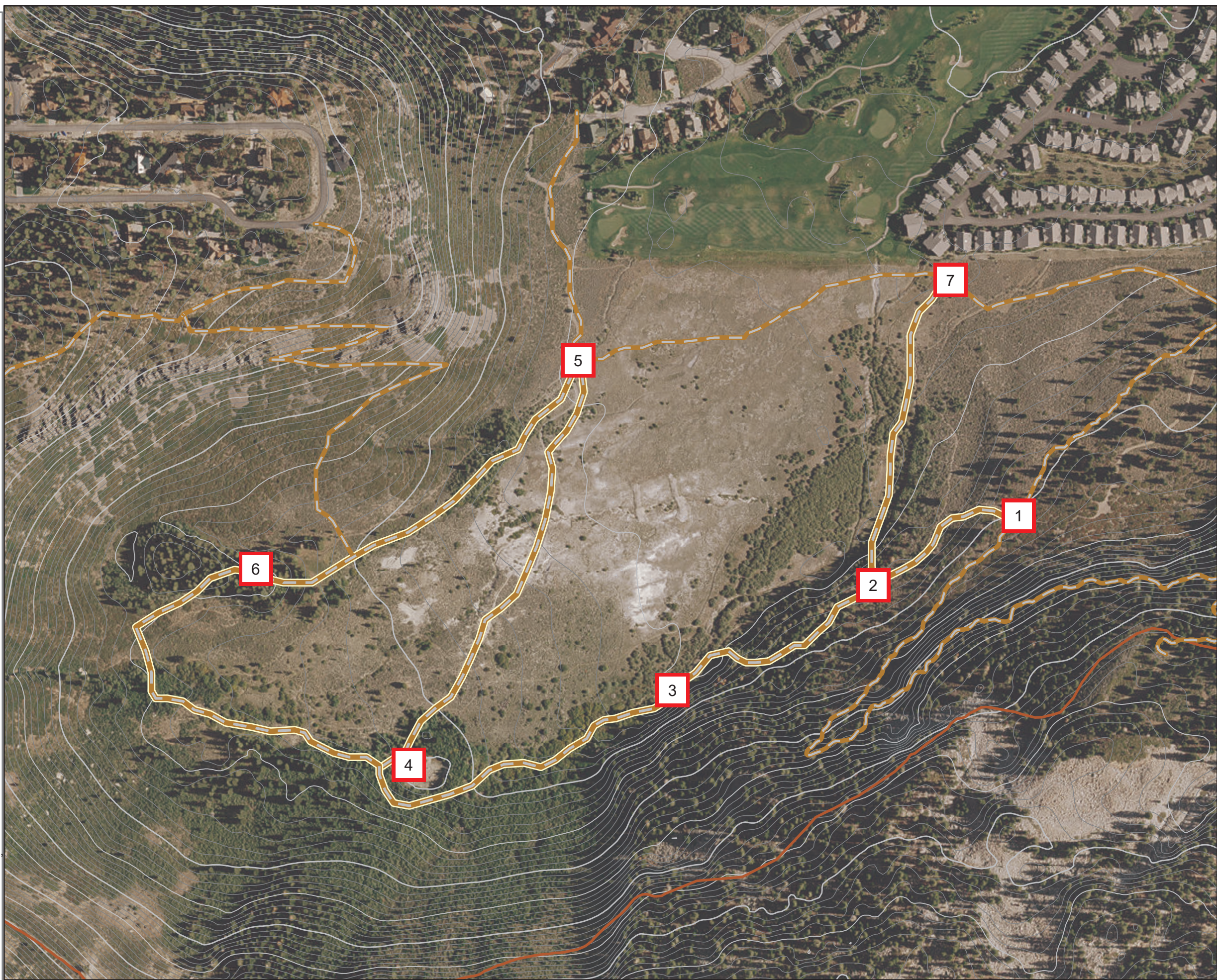
CONCEPT: Non-motorized stacked-loop trail system in the meadow. Articulate a stacked-loop trail system from the borrow pit staging area (see Summer Map ID #1), along the base of the Sherwins to the Tamarack Street trailhead (see Summer Map ID #2), and back to the borrow pit staging area. Facilities will include signage. The southern half of the perimeter trail of this system will be soft surface; the northern half will be hard surface or paved (see Summer Map ID #7). The entire system will be open to nonmotorized use only. An equestrian crossing across Bodle Ditch will be necessary. Map draft date: 03/15/17

Legend

-  SHARP TTC Trail Alignments
-  SHARP Proposed Trails
-  INF Trails
-  Centerlines
- 10ft Contours**
-  Contour Line, Major
-  Contour Line, Minor
-  Contour Line, Intermediate

SHARP TTC

- The SHARP TTC is committed to staying true to the original wording and intent of the SHARP proposals as crafted by the Sherwins Working Group, and will therefore not revisit or revise any part of any recommendation unless warranted by agency sideboards or other opportunities or constraints as identified by land management agencies such as the INF.
- This map is for informational purposes and may not have been prepared for, or be suitable for legal, engineering, or surveying purposes. Users of this information should review or consult the primary data and information sources to ascertain the usability of the information.





**Project Cover Sheet:
Map ID #S08**

SHARP CONCEPT	Non-motorized stacked-loop trail system in the meadow. Articulate a stacked-loop trail system from the Borrow Pit Staging Area (see Summer Map ID #01), along the base of the Sherwins to the Tamarack Street Trailhead (see Summer Map ID #02), and back to the Borrow Pit Staging Area. Facilities will include signage. The southern half of the perimeter trail of this system will be soft surface; the northern half will be hard surface or paved (see Summer Map ID #07). The entire system will be open to non-motorized use only. An equestrian crossing across Bodle Ditch will be necessary.
SHARP RATIONALE	To improve the existing non-motorized opportunities in the meadow, a "stacked-loop" or "nested" trail system will be created to offer multiple route and surface options to a variety of summer users. The primary section of trail, out from which the smaller, nested loops will branch, will connect to the access points identified in Summer Map ID #02 (Tamarack Street Trailhead) and Summer Map ID #03 (Snowcreek VIII access/egress point) via the hard-surface or paved northern half of the loop, providing consistent and easy access/egress across the area to the loop system, the Borrow Pit Staging Area, and points of connection farther north and east. Creating a soft-surface southern half will provide an option for equestrians unable to use a hard-surface or paved trail as well as those seeking a more "wild" or "natural" experience.
RELATED PROJECTS	SHARP project ID #S01- See the SHARP Summer Proposal for details. SHARP project ID #S02- See the SHARP Summer Proposal for details. SHARP project ID #S07- See the SHARP Summer Proposal for details. SHARP project ID #S18- See the SHARP Summer Proposal for details. SHARP project ID #W09a - See the SHARP Winter Proposals for details.
WORKFLOW CHECKLIST TASK	DATE COMPLETED
Group overview in-house meeting to present work plan and desired deliverables	January 2017 - March 2017
Group overview field trip and technical analysis in-house	January 2017 - March 2017
Drafting/staking	January 2017 - March 2017
Technical review field trip	None
Draft revision	January 2017 - March 2017
Final review meeting	March 16, 2017
Presentation to USFS	None
AGENCY SIDEBOARDS	None
DESIRED OUTSIDE PARTICIPANTS	Town of Mammoth Lakes, and Inyo National Forest.
ENVIRONMENTAL REVIEW	"SHARP Projects – NEPA" as submitted to USFS.
OTHER NOTES	None
PARTICIPANTS	2017 Participants: Joel Rathje, John Wentworth, Andrew Mulford, and Kelly Workman.