



## MLTS Assets Track #1

**Document Date:** October 14, 2011

**Document Contents:**

1. "Mammoth Lakes Trail System Atlas Summary"
2. "Potential Facilities for Addition to Existing TOML Use Permit"
3. "TOML/MLTS Draft Capital Improvement Plan"
4. "List of potential implementation projects for the near-term"
5. "Appendix A: Mammoth Lakes Trail System Atlas"

**Document Summary:**

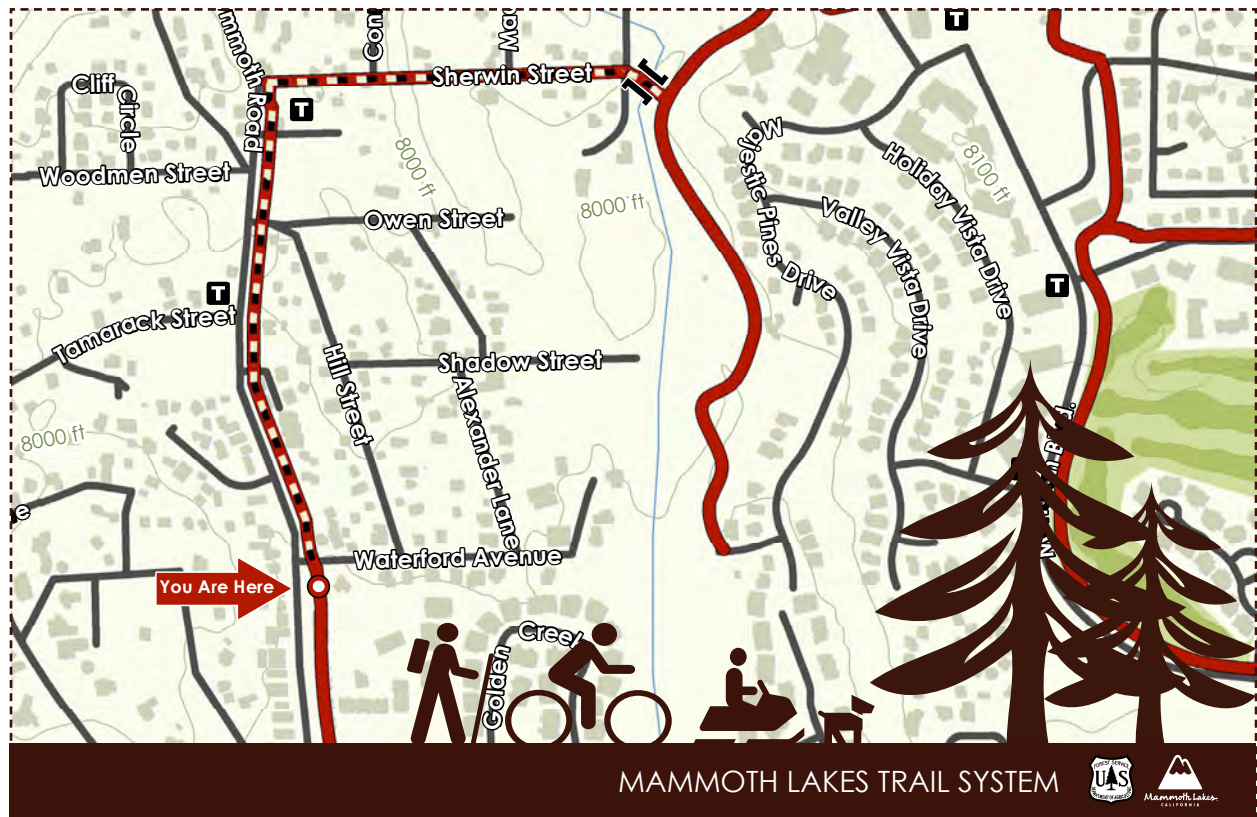
1. Inventory of potential facilities to be represented as part of the MLTS
  - a. Trails
  - b. Bike Lanes
  - c. Nodes
  - d. Sample pages from MLTS Atlas
2. Summary table of potential facilities for addition to the Town's existing special use permit
3. Draft Capital Improvement Plan for MLTS projects based on the Town's Trail System Master Plan
  - a. Recreation Nodes
  - b. Multi-Use Paths
  - c. On-Street Bikeways
  - d. Crossing Improvements
  - e. SHARP Priority Projects
4. List of potential implementation projects for the near-term
  - a. SHARP ID #S05b
  - b. SHARP ID #S13
  - c. SHARP ID #S15
  - d. SHARP ID #S05a (documentation to be developed)
  - e. Mountain View Trail (documentation to be developed)
  - f. Lakes Basin User-Trails (documentation to be developed)

**Document Contributors:**

Meeting Dates and Attendance:

8/25: MLTPA/INF; Chuck Megivern, Drew Blankenbaker, Jon Kazmierski  
9/1: MLTPA/SMG; Chuck Megivern, Drew Blankenbaker, Danna Stroud  
9/8: Chuck Megivern, Drew Blankenbaker, Jon Kazmierski, John Wentworth  
9/23: MLTPA/TOML; Chuck Megivern, Haslip Hayes, Nate Greenberg  
9/26: MLTPA/INF; Chuck Megivern, John Wentworth, Jon Kazmierski

**Next Steps:**

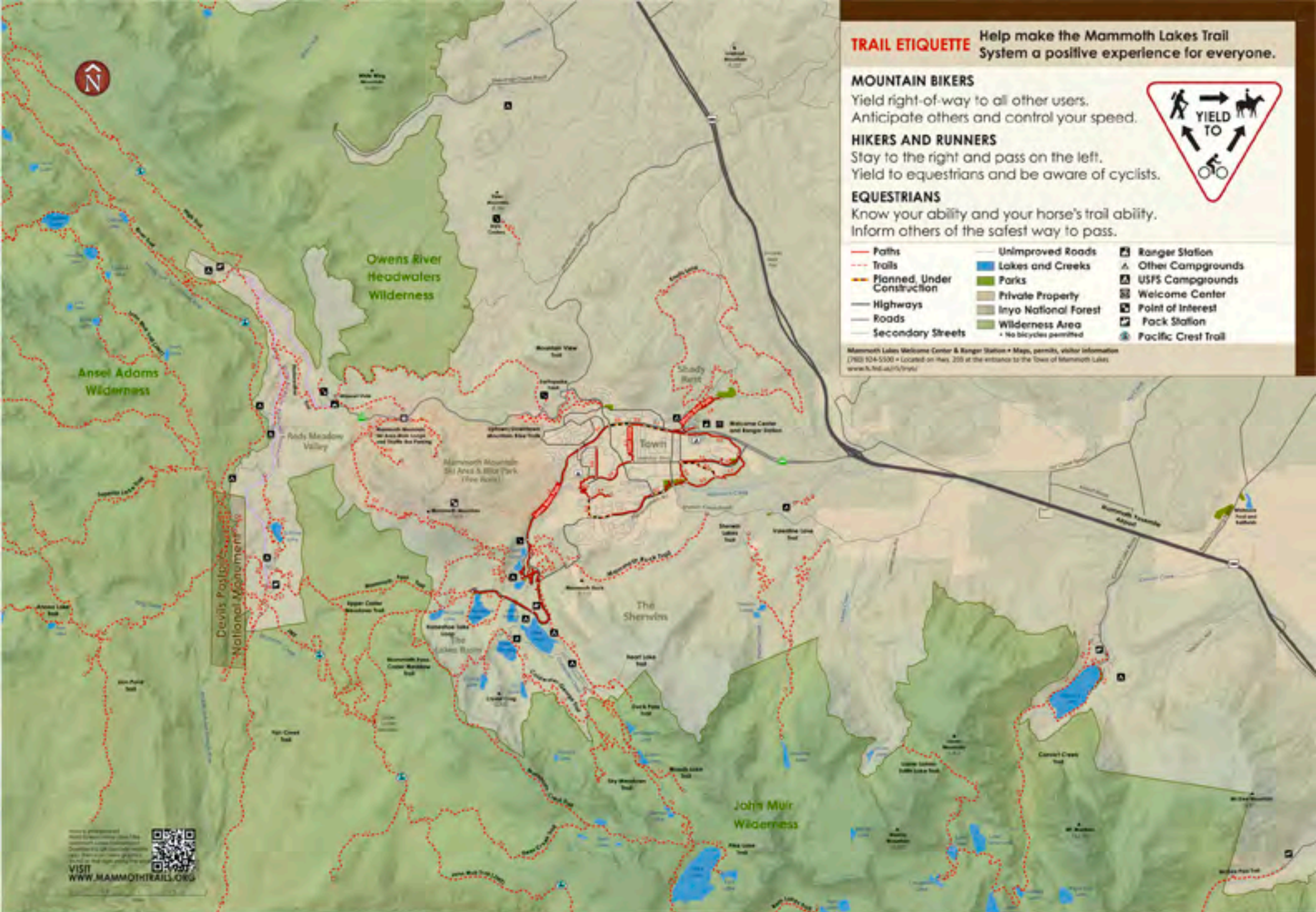


## Mammoth Lakes Trail System Atlas Summary

Summary tables of facilities inventoried in the MLTS Atlas  
 See Appendix A for the complete MLTS Atlas

Updated October 13, 2011





**TRAIL ETIQUETTE** Help make the Mammoth Lakes Trail System a positive experience for everyone.

**MOUNTAIN BIKERS**  
Yield right-of-way to all other users. Anticipate others and control your speed.

**HIKERS AND RUNNERS**  
Stay to the right and pass on the left. Yield to equestrians and be aware of cyclists.

**EQUESTRIANS**  
Know your ability and your horse's trail ability. Inform others of the safest way to pass.



- |                               |  |                       |
|-------------------------------|--|-----------------------|
| — Paths                       | — Unimproved Roads                           | ⊠ Ranger Station      |
| - - - Trails                  | ■ Lakes and Creeks                           | △ Other Campgrounds   |
| — Planned, Under Construction | ■ Parks                                      | ⊠ USFS Campgrounds    |
| — Highways                    | ■ Private Property                           | ⊠ Welcome Center      |
| — Roads                       | ■ Inyo National Forest                       | ⊠ Point of Interest   |
| — Secondary Streets           | ■ Wilderness Area<br>* No bicycles permitted | ⊠ Pack Station        |
|                               |  | ⊠ Pacific Crest Trail |

Mammoth Lakes Welcome Center & Ranger Station • Maps, permits, visitor information  
(760) 934-5300 • Located on Hwy. 205 at the entrance to the Town of Mammoth Lakes  
[www.fs.fed.us/r1/trail/](http://www.fs.fed.us/r1/trail/)

VISIT  
[WWW.MAMMOTHTRAILS.ORG](http://WWW.MAMMOTHTRAILS.ORG)

## TOML Owned Trails

<u>Trail Name</u>	<u>Trail Type</u>	<u>Length (ft)</u>
North Main Connector	MUP	2787
203 Underpass Connector*	MUP	454
Lakefront Path	MUP	1400
Shady Rest Path	MUP	4331
Town Loop	MUP	28307
Sierra Park Connector	MUP	1444
Lakes Basin Path	MUP	29012
Lodestar Connector	MUP	2384
Town Loop	MUP	20
Mammoth Creek Connector*	MUP	134
Chateau Connector	MUP	211
Trails Neighborhood Connector	MUP	318
Meridian Connector	MUP	5085
Mammoth Creek Park Path*	MUP	413
Sherwins Vista	MUP	234
Lakefront Connector	MUP	521
North Main Connector	Promenade	828
Sierra Park Connector	Sidewalk	1801
Temporary Town Loop	MUP	3357
North Waterford Connector	MUP	1922

\* denotes the need for consensus naming review

## Inyo National Forest Non-Wilderness Trails

<u>Trail Name</u>	<u>Trail Type</u>	<u>Length (ft)</u>
MAMMOTH PACK STATION - DUCK PASS (NW)*	TSMP SS 2-Equestrian	9168
CONVICT LAKE LOOP (NW) *	TSMP SS 2-Hike	12109
CONVICT LAKE PACK (NW)*	TSMP SS 2-Hike	1904
CONVICT LAKE HIKER PARKING (NW)*	TSMP SS 2-Hike	2371
RAINBOW FALLS WAGON (NW)*	TSMP SS 2-Equestrian	1973
Sotcher Lake-Mammoth Pass/2612bns*	TSMP SS 2-Hike	4239
Sotcher Feeder/2612c*	TSMP SS 2-Hike	4361
Sotcher Lake VIS Loop/2612*	TSMP SS 2-Hike	7663
Sotcher lake-Reds CG/2612ans*	TSMP SS 2-Hike	743
AgnewMeadow-Pumice Flat CG/2633ns*	TSMP SS 2-Hike	12473
Hot Creek VIS/2806*	TSMP SS 2-Hike	1248
Seven Lakes Point/2703bns*	TSMP SS 2-Hike	3280
Barrett Lake - Lake Mary/2709cns*	TSMP SS 2-Equestrian	5862
TJ Lake Loop/2709d*	TSMP SS 2-Hike	1704
Minaret Vista Alt/2609alt*	TSMP SS 2-Hike	654
Minaret Vista VIS/2609*	TSMP SS 2-Hike	1069
McGee Pass*	TSMP SS 2-Hike	5314
McGee Pass*	TSMP SS 2-Hike	6470
RAINBOW FALLS (NW)*	TSMP SS 2-Hike	3584
Rainbow Falls/2623*	TSMP SS 2-Hike	6377
Agnew Wildflower Loop*	TSMP SS 2-Hike	4100
Starkweather spur?*	TSMP SS 2-Hike	478
Earthquake Fault *	TSMP SS 2-Hike	1231
Highway 203*	Bike (III)	4701

\* denotes the need for concensus naming review

## John Muir Wilderness Trails

<u>Trail Name</u>	<u>Trail Type</u>	<u>Length (ft)</u>
Duck Pass Trail	TSMP SS 2-Hike	19764
Mammoth Crest Trail	TSMP SS 2-Hike	41043
Sky Meadows Trail	TSMP SS 2-Hike	8608
EMERALD LAKE - SKELTON LAKE (JM)*	TSMP SS 2-Hike	6038
ARROWHEAD LAKE (JM)*	TSMP SS 2-Hike	1555
Heart Lake Trail	TSMP SS 2-Hike	5568
Woods Lake Trail	TSMP SS 2-Hike	5438
Convict Creek Trail	TSMP SS 2-Hike	36911
JMT/PCT	TSMP SS 2-Hike	23193
Upper Crater Meadows Trail	TSMP SS 2-Hike	13742
Mammoth Pass- Crater Meadow Trail	TSMP SS 2-Hike	18952
Laurel-Lakes- Edith Lake Trail	TSMP SS 2-Hike	22337
Arrowhead Lake Loop/2710bns*	TSMP SS 2-Hike	1189
John Muir Trail (JMT)	TSMP SS 2-Hike	94790
Ram Lakes Trail	TSMP SS 2-Hike	12278
Pika Lake Trail	TSMP SS 2-Hike	5601
Deer Creek Trail	TSMP SS 2-Hike	18400
DOROTHY LAKE SPUR (JM)*	TSMP SS 2-Hike	5146
McGEE PASS (JM)*	TSMP SS 2-Hike	71098
Pumice Butte*	TSMP SS 2-Hike	10224
Mammoth Crest-Duck Pass*	TSMP SS 2-Hike	3361
DUCK PASS (JM)*	TSMP SS 2-Hike	10196
PURPLE LAKE-CASCADE VALLEY (JM)*	TSMP SS 2-MTB	13976
Fish Creek Trail	TSMP SS 2-Hike	98222
BALDWIN CANYON (JM)*	TSMP SS 2-Hike	24648
STEELHEAD LAKE (JM)*	TSMP SS 2-Hike	6680
Valentine Lake Trail	TSMP SS 2-Hike	24075

\* denotes the need for concensus naming review

## Ansel Adams Wilderness Trails

<u>Trail Name</u>	<u>Trail Type</u>	<u>Length (ft)</u>
RED CONES C/O (AA)*	TSMP SS 2-Hike	6688
MCCLEOD LAKE SPUR (NW)*	TSMP SS 2-Hike	1589
Mammoth Pass Trail	TSMP SS 2-Hike	21620
Rim Trail	TSMP SS 2-Hike	7979
Rainbow Falls/2623*	TSMP SS 2-Hike	5940
Pacific Crest Trail (PCT)	TSMP SS 2-Hike	8595
Summit Meadow/2601*	TSMP SS 2-Hike	24940
SUMMIT MEADOW - HOLCOMB C/O (AA)*	TSMP SS 2-Hike	10567
ANONA LAKE (AA)*	TSMP SS 2-Hike	8182
Superior Lake Trail	TSMP SS 2-Hike	23600
Superior Lake Trail	TSMP SS 2-Hike	5815
HOLCOMB LAKE (AA)*	TSMP SS 2-Hike	7797
JMT	TSMP SS 2-Hike	75089
PCT	TSMP SS 2-Hike	28466
MINARET CREEK (AA)*	TSMP SS 2-Hike	27203
MINARET MINE*	TSMP SS 2-Hike	9722
EMILY LAKE SPUR (AA)*	TSMP SS 2-Hike	8795
High Trail (PCT)	TSMP SS 2-Hike	33807
AGNEW CAMPGROUND C/O*	TSMP SS 2-Hike	1728
SHADOW CREEK (AA) (TC3)*	TSMP SS 2-Hike	30772
RIVER SOUTH (AA)*	TSMP SS 2-Hike	5144
RIVER NORTH (AA)*	TSMP SS 2-Hike	22914
LAURA LAKE (AA)*	TSMP SS 2-Hike	3161
CLARK LAKES (AA)*	TSMP SS 2-Hike	19106
AGNEW PASS (AA)*	TSMP SS 2-Hike	3736
ASHLEY LAKE (AA)*	TSMP SS 2-Hike	6738
Lois Meadow/2503cns*	TSMP SS 2-Hike	2887
San Joaquin Peak C/O/2620*	TSMP SS 2-Hike	5408
Lion Point Trail	TSMP SS 2-Hike	15949

\* denotes the need for concensus naming review

## Owens River Headwaters Wilderness Trails

<u>Trail Name</u>	<u>Trail Type</u>	<u>Length (ft)</u>
Glass Creek Meadow/2608*	TSMP SS 2-Hike	10054

\* denotes the need for concensus naming review



## Mammoth Mountain Ski Area Trails

<u>Trail Name</u>	<u>Trail Type</u>	<u>Length (ft)</u>
Downtown	TSMP SS 2-MTB	25454
Uptown	TSMP SS 2-MTB	25067
Mammoth Mountain Trail	TSMP SS 2-Hike	16883
St. Anton Trail	TSMP SS 2-Hike	9080
Main Lodge Trail	TSMP SS 2-Hike	6245
Minaret Vista Trail	TSMP SS 2-Hike	6451

\* denotes the need for concensus naming review

## Bike Lanes

<u>Trail Name</u>	<u>Trail Type</u>	<u>Length (ft)</u>
Kelley Rd.	Bike (III)	1254
Lakeview Blvd	Bike (III)	3008
Majestic Pines Dr.	Bike (III)	5081
Canyon Parking Lot	Bike (III)	1126
Highway 395 (South)	Bike (II)	19817
Minaret Road	Bike (II)	7375
Main Street	Bike (II)	5656
Highway 203	Bike (II)	23588
Forest Trail	Bike (III)	5851
Highway 395 (North)	Bike (II)	20387
Mammoth Scenic Loop	Bike (II)	31228
Twin Lakes Road	Bike (II)	4854
Benton Crossing Road	Bike (II)	6515
Meridian Blvd.	Bike (II)	14342
Lake Mary Road	Bike (III)	512
Old Mammoth Road	Bike (II)	2020
Canyon Blvd.	Bike (II)	5575
Lake View Drive	Bike (III)	224
	Bike (III)	166

\* denotes the need for concensus naming review

## Town of Mammoth Lakes Nodes

<u>Trail Name</u>	<u>Owner</u>	<u>Node Type</u>
Community Center Park	TOML	TSMP
Mammoth Creek Park [West]	TOML	TSMP
Shady Rest Park	TOML	TSMP
Trails End Park	TOML	TSMP

\* denotes the need for consensus naming review

## Inyo National Forest Nodes

<u>Trail Name</u>	<u>Owner</u>	<u>Node Type</u>
Mammoth Creek Park [East]	INF	TSMP
Earthquake Fault	INF	TSMP
Power Plant*	INF	TSMP
Winter Closure on Sawmill Cutoff Rd*	INF	TSMP
Borrow Pit*	INF	TSMP
Welcome Center and Ranger Station	INF	TSMP
Winter Only- Lake Mary Rd. winter terminus*	INF	TSMP
Path along Snowcreek V fence line*	INF	TSMP
Mill City	INF	TSMP
Northern terminus of Sierra Blvd. At Forest tr*	INF	TSMP
Horseshoe Lake Picnic Area	INF	TSMP
MMSA at Austria Hof parking lot*	INF	TSMP
Twin Lakes Vista	INF	TSMP
Uptown Downtown Mountain Bike Trails	INF	TSMP
Lake George	INF	USFS Rec Sites
Hayden Cabin Museum	INF	USFS Rec Sites
Hot Creek	INF	USFS Rec Sites
Sherwin Lakes Trailhead	INF	USFS Rec Sites
Inyo Craters	INF	USFS Rec Sites
SHADOW LAKE/RIVER TH*	INF	USFS Rec Sites
RAINBOW FALLS TH*	INF	USFS Rec Sites
STARKWEATHER FISHING SITE*	INF	USFS Rec Sites
Minaret Vista	INF	USFS Rec Sites
VALENTINE LAKE TH*	INF	USFS Rec Sites
MAM MT, BOTTEMLESS PIT, ETC TH*	INF	USFS Rec Sites
SOTCHER LAKE TH*	INF	USFS Rec Sites
PANORAMA DOME TH*	INF	USFS Rec Sites
MAMMOTH ROCK*	INF	USFS Rec Sites
LAUREL LAKES TH*	INF	USFS Rec Sites
CONVICT CREEK TH*	INF	USFS Rec Sites
CONVICT LAKE LOOP TH*	INF	USFS Rec Sites
AGNEW MEADOW WILDFLOWER TH*	INF	USFS Rec Sites
HIGH TH*	INF	USFS Rec Sites
FISH CREEK TH*	INF	USFS Rec Sites
Panorama Dome MTB Trails @ Old Mammoth Road	INF	
Mammoth Rock TH @ Old Mammoth Rd.*	INF	
Coldwater Creek Trailhead	INF	TSMP

\* denotes the need for concensus naming review

## Other Nodes

<u>Trail Name</u>	<u>Owner</u>	<u>Node Type</u>
Canyon Lodge	MMSA	TSMP
Eagle Lodge	MMSA	TSMP
Mammoth Mountain Ski Area Main Lodge	MMSA	TSMP
Tamarack Lodge	MMSA	TSMP
North Village	MMSA	TSMP
Tamarack St.	Plum	TSMP
Sledz	Private-UNK	TSMP
Minaret Snowplay Area	Private UNK	TSMP

\* denotes the need for concensus naming review

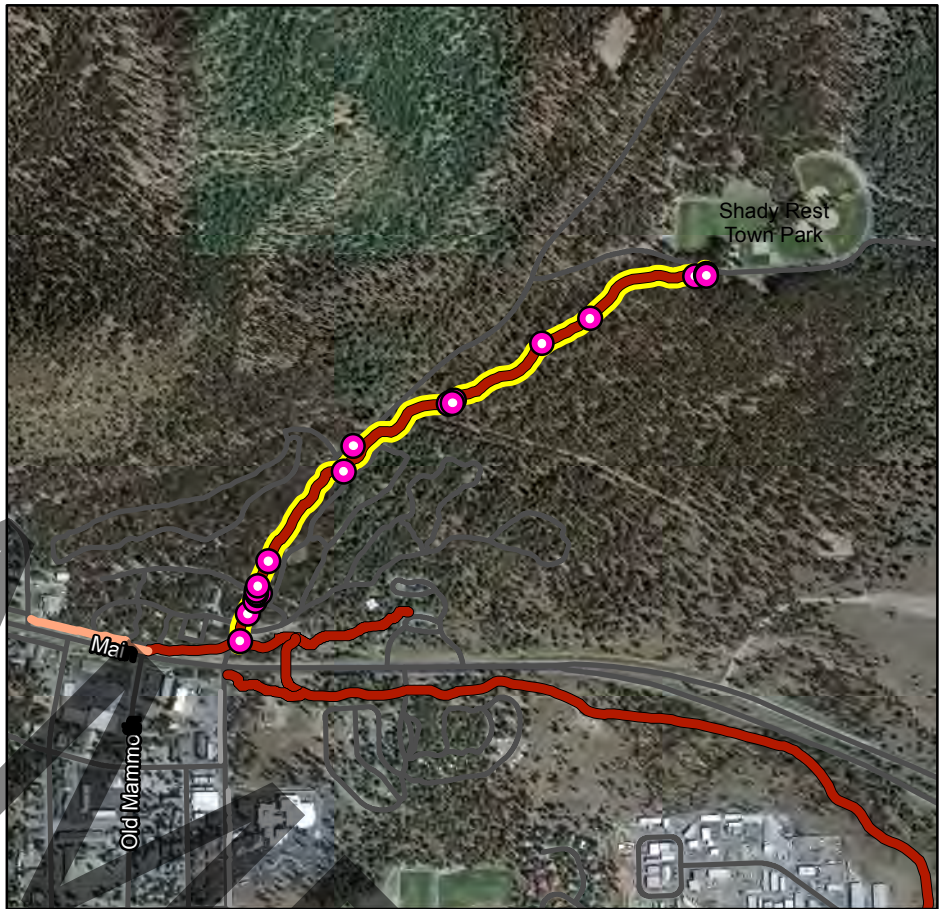
AKA: Shady Rest Path

## Facility Information

Facility Grouping: MUPS  
 Facility Type: MUP  
 Trail Surface: Paved  
 Length: 4331 Ft  
 Ownership: TOML

### Jurisdictions

UGB?: N  
 TOML Municipal?: Y  
 TOML Planning: Y  
 JM Wilderness?: N  
 AA Wilderness?: N  
 ORH Wilderness: N  
 Devils Postpile?: N



## Trail System Support Facilities

Picnic Tables:	0	Bollards:	3
Benches:	2	Dog Bags:	1
Trash:	2	Bike Racks:	0
Blaze Markers (MTB, Blue, Orange, XC):	9	All Other Signage:	

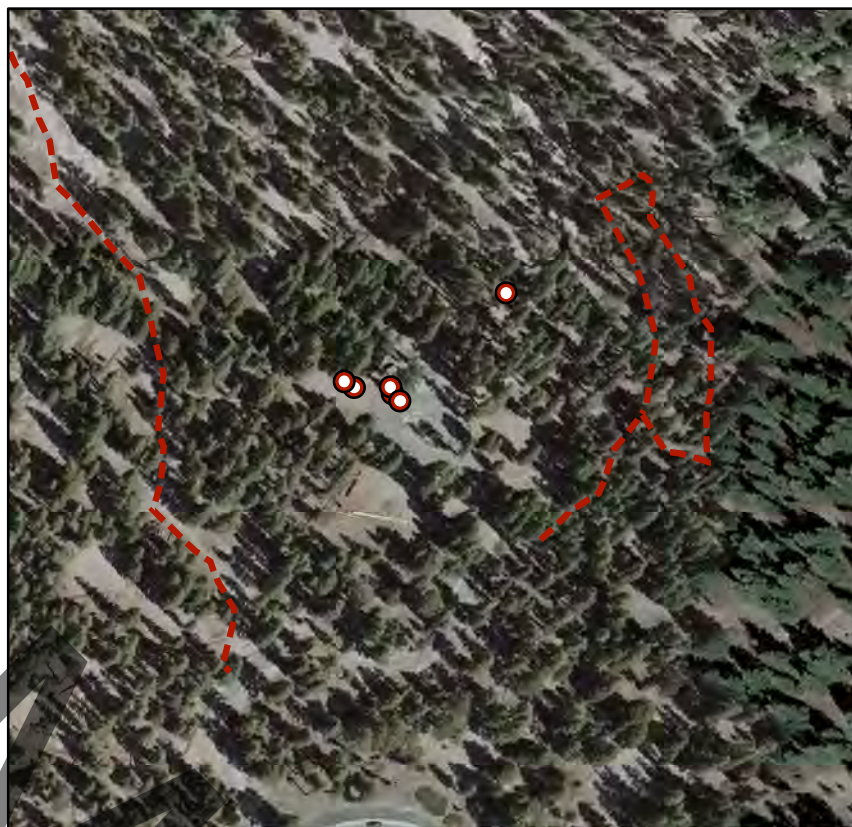
## Maintenance

## Capital Improvement Programs

# Earthquake Fault

AKA: Earthquake Fault parking lot

Ownership: INF  
Node Type: TSMP



TOML UGB?: N  
TOML Municipal?: Y  
TOML Planning?: Y

## Trail System Support Facilities

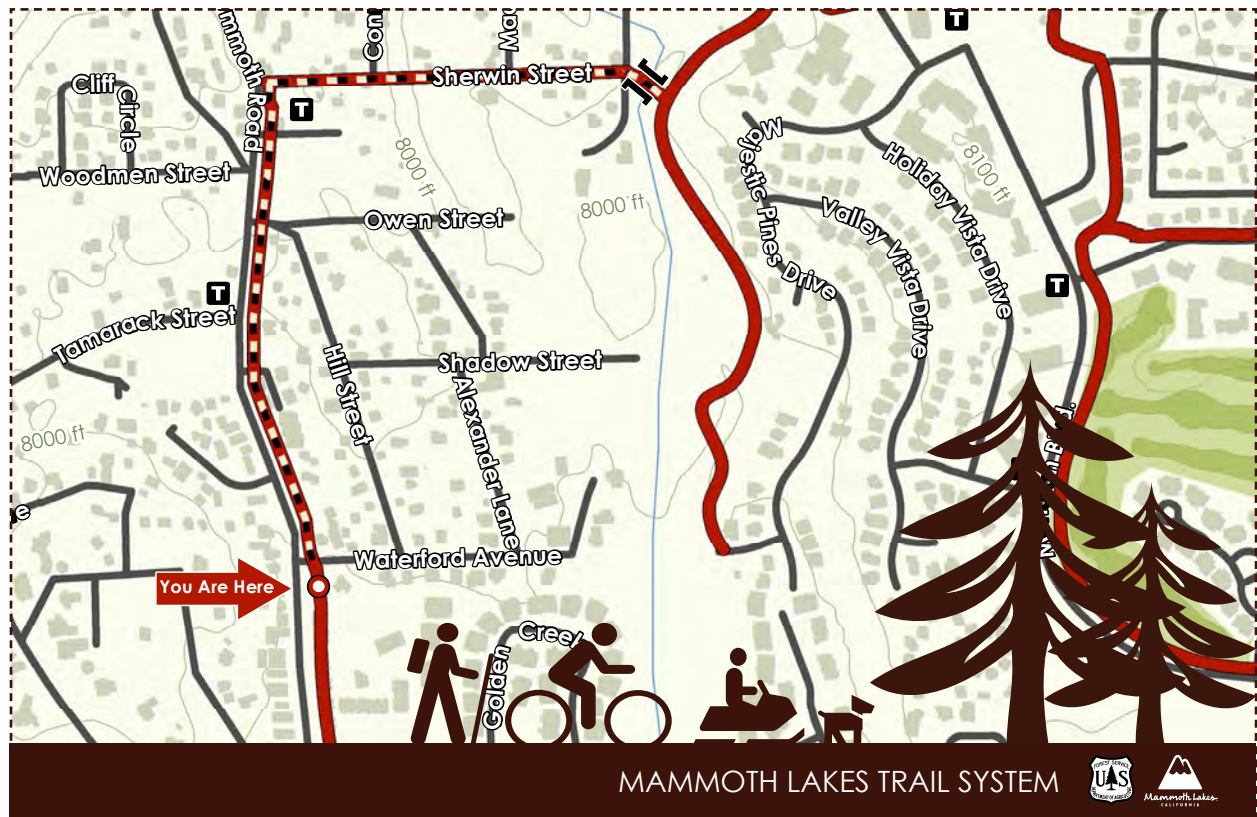
Potable Water:	0	BBQ Grills:	1	Barbox:	0
Recycling:	0	Bathroom:	0	Monofilament:	0
Signage:	1	Bench:	0	Parking:	1
Trash:	1	Bikerack:	0	Picnic Tables:	1

Support Facility Notes: 2 stall Vault Toilet, Trashcan

## Capital Improvement Programs

TOML 2011-2016 CIP: N/A

## Maintenance



Potential Facilities for Addition to Existing TOML Use Permit

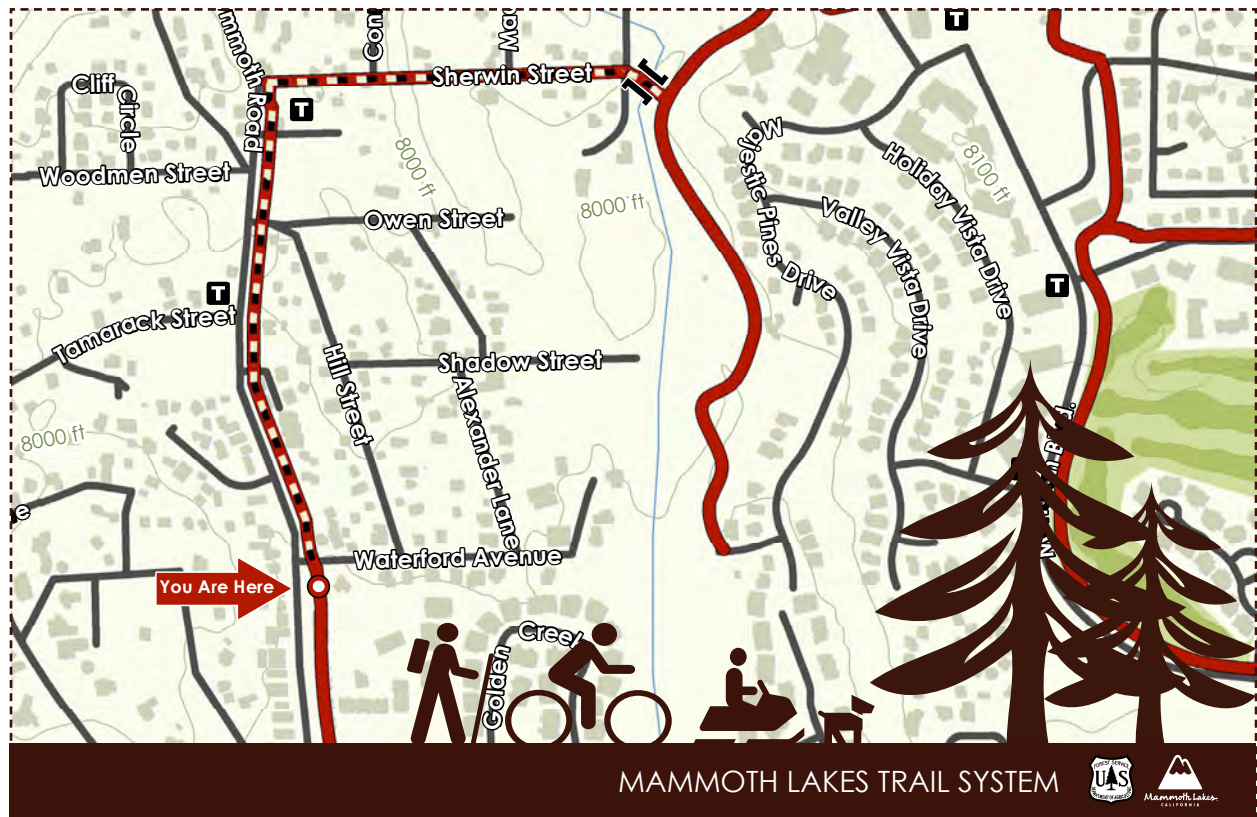
Updated October 13, 2011





## Potential soft-surface facilities for incorporation into a Special Use Permit to be held by the Town of Mammoth Lakes

<u>Trail Name</u>	<u>Trail Type</u>	<u>Owner</u>	<u>Length (ft)</u>
1 Arrowhead Lake Trails	TSMP SS 2-Hike	INF	2744
2 Coldwater-George Trail	TSMP SS 2-Hike	INF	14917
3 Crystal Lake Trail	TSMP SS 2-Hike	INF	1349
4 Duck Pass Trail	TSMP SS 2-Hike	INF	19764
5 Earthquake Fault Trail	TSMP SS 2-Hike	INF	1231
6 Heart Lake Trail	TSMP SS 2-Hike	INF	5568
7 Horseshoe Lake Loop	TSMP SS 2-MTB	INF	8790
8 Knolls Loop	TSMP SS 2-MTB	INF	52029
9 Mammoth Rock Trail	TSMP SS 2-MTB	INF	13649
10 Mill City Wheel Trail	TSMP SS 2-Hike	INF	1055
11 Mountain View Trail	TSMP SS 2-MTB	INF	28217
12 Panorama Dome Trails	TSMP SS 2-Hike	INF	8456
13 Panorama MTB Trails	TSMP SS 2-MTB	INF	7119
14 TJ Lake Loop	TSMP SS 2-Hike	INF	1704
15 Mammoth Crest Trail (to Crystal Lake Trail JCT)	TSMP SS 2-Hike	INF	36890
16 Mammoth Pass-Crater Meadow Trail (McLeod to AA Wilderness)	TSMP SS 2-Hike	INF	4080
17 Sherwin Lakes Trail	TSMP SS 2-Hike	INF	15615



# TOML/MLTS Draft Capital Improvement Plan

Updated October 13, 2011



**TOML/MLTS Draft CIP  
Recreation Nodes Cost Estimates**

<b>Name/Description</b>	<b>Node Type</b>	<b>Season</b>	<b>Signage</b>	<b>Restroom</b>	<b># Spaces</b>	<b>Cost</b>	<b>Capital Cost</b>	<b>Maintenance Cost</b>
Canyon Lodge (MMSA)	Portal	Winter	\$ 8,750	\$ -		\$ -	\$ 8,750	\$ 500
Main Lodge (MMSA)	Portal	Year-Round	\$ 8,750	\$ -		\$ -	\$ 8,750	\$ 500
North Village (MMSA)	Portal	Year-Round	\$ 8,750	\$ -		\$ -	\$ 8,750	\$ 500
Tamarack Lodge (MMSA)	Portal	Year-Round	\$ 8,750	\$ -		\$ -	\$ 8,750	\$ 500
Community Center	Park	Year-Round	\$ 8,750	\$ 200,00		\$ -	\$ 208,750	\$ 102,000
Mammoth Creek Park, East	Park	Year-Round	\$ 8,750	\$ 00,000	15	\$ 150,000	\$ 358,750	\$ 102,000
Mammoth Creek Park, West	Park	Year-Round	\$ 8,750	\$ -		\$ -	\$ 8,750	\$ 50,000
Shady Rest Park	Park	Summer	\$ 8,750	\$ -		\$ -	\$ 8,750	\$ 5,000
Trails End Park	Park	Year-Round	\$ 8,750	\$ -		\$ -	\$ 8,750	\$ 5,000
Coldwater Campground	Trailhead	Summer	\$ 8,750	\$ -		\$ -	\$ 8,750	\$ 500
Earthquake Fault	Trailhead	Year-Round	\$ 8,750	\$ -		\$ -	\$ 8,750	\$ 500
Horseshoe Lake	Trailhead	Summer	\$ 8,750	\$ -		\$ -	\$ 8,750	\$ 500
Hwy 203 Motorized Access	Trailhead	Year-Round	\$ 8,750	\$ 200,000	15	\$ 73,440	\$ 282,190	\$ 102,000
Lake George	Trailhead	Summer	\$ 8,750	\$ -		\$ -	\$ 8,750	\$ 500
Power Plant	Trailhead	Winter	\$ 8,750	\$ 200,000	15	\$ 202,500	\$ 411,250	\$ 75,000
Shady Rest / Saw Mill Cutoff Road	Trailhead	Winter	\$ 8,750	\$ -		\$ -	\$ 8,750	\$ 500
Sherwin Creek Rd, USFS gravel borrow pit	Trailhead	Year-Round	\$ 8,750	\$ 200,000	15	\$ 202,500	\$ 411,250	\$ 102,000
Sierra Blvd at Forest Trail	Trailhead	Year-Round	\$ 8,750	\$ 200,000	15	\$ 202,500	\$ 411,250	\$ 102,000
Eagle Lodge - temp (MMSA)	Access/Egress	Year-Round	\$ 2,750	\$ -		\$ -	\$ 2,750	\$ 250
Lake Mary Bike Path NE Terminus	Access Egress	Summer	\$ 2,750	\$ -		\$ -	\$ 2,750	\$ 250
Lake Mary Rd winter terminus	Access Egress	Winter	\$ 2,750	\$ -		\$ -	\$ 2,750	\$ 250
Mill City	Access/egress	Winter	\$ 2,750	\$ -		\$ -	\$ 2,750	\$ 250
Tamarack Street	Access/Egress	Year-Round	\$ 2,750	\$ -		\$ -	\$ 2,750	\$ 5,000
Twin Lakes Parking	Access/Egress	Summer	\$ 2,750	\$ -		\$ -	\$ 2,750	\$ 250
						<b>TOTAL COST</b>	<b>\$ 2,204,940</b>	<b>\$ 655,750</b>

**TOML/MLTS Draft CIP  
Multi-Use Path Cost Estimates**

<b>Project No.</b>	<b>Name</b>	<b>Length (LF)</b>	<b>Improvement Type</b>	<b>Unit Cost</b>	<b>Capital Cost</b>	<b>Maintenance Cost</b>
MUP 2-1	Town Loop	921	MUP	\$ 230	\$ 211,830	\$ 1,744
			Tunnel	\$ 500,000	\$ 500,000	\$ -
MUP 2-2	Lodestar Connector	441	MUP	\$ 230	\$ 101,430	\$ 835
MUP 3-1	College Connector	3,769	MUP	\$ 230	\$ 866,870	\$ 7,138
MUP 3-2	Elementary School Connector	426	MUP	\$ 230	\$ 97,980	\$ 807
MUP 3-3	Industrial Park Connector	2,275	MUP	\$ 230	\$ 523,250	\$ 4,309
MUP 3-4	Mammoth Creek Park Connector	602	MUP	\$ 230	\$ 138,460	\$ 1,140
MUP 3-5	Manzanita Connector	480	MUP	\$ 230	\$ 110,400	\$ 909
MUP 3-6	MCWD Access	677	MUP	\$ 230	\$ 155,710	\$ 1,282
MUP 3-7	Lodestar to Bear Lake Connector					
MUP 3-8	Hidden Valley to Minaret Connector					
MUP 3-9	Center Street to Hidden Creek Connector					
MUP 3-10	Manzanita to Tavern Connector					
MUP 3-11	Manzanita Path					
MUP 3-12	North Village to St. Anton Connector					
MUP 3-13	Eagle Path					
MUP 4-1	Shady Rest Park Path Extension	6,769	MUP	\$ 230	\$ 1,556,870	\$ 12,820
MUP 4-2	Forest Trail to Shady Rest Connector	2,792	MUP	\$ 230	\$ 642,160	\$ 5,288
MUP 4-3	Knolls Path (south route)	14,098	MUP	\$ 230	\$ 3,242,540	\$ 26,701
MUP 4-4	Mammoth Creek Path	5,596	MUP	\$ 230	\$ 1,287,080	\$ 10,598
MUP 4-5	Sherwin/Snowcreek Connector					
	<b>TOTAL LENGTH</b>	<b>38,846</b>		<b>TOTAL COST</b>	<b>\$ 9,434,580</b>	<b>\$ 73,572</b>
		<b>7.4 MI</b>				

**TOML/MLTS Draft CIP  
On-Street Bikeway Cost Estimates**

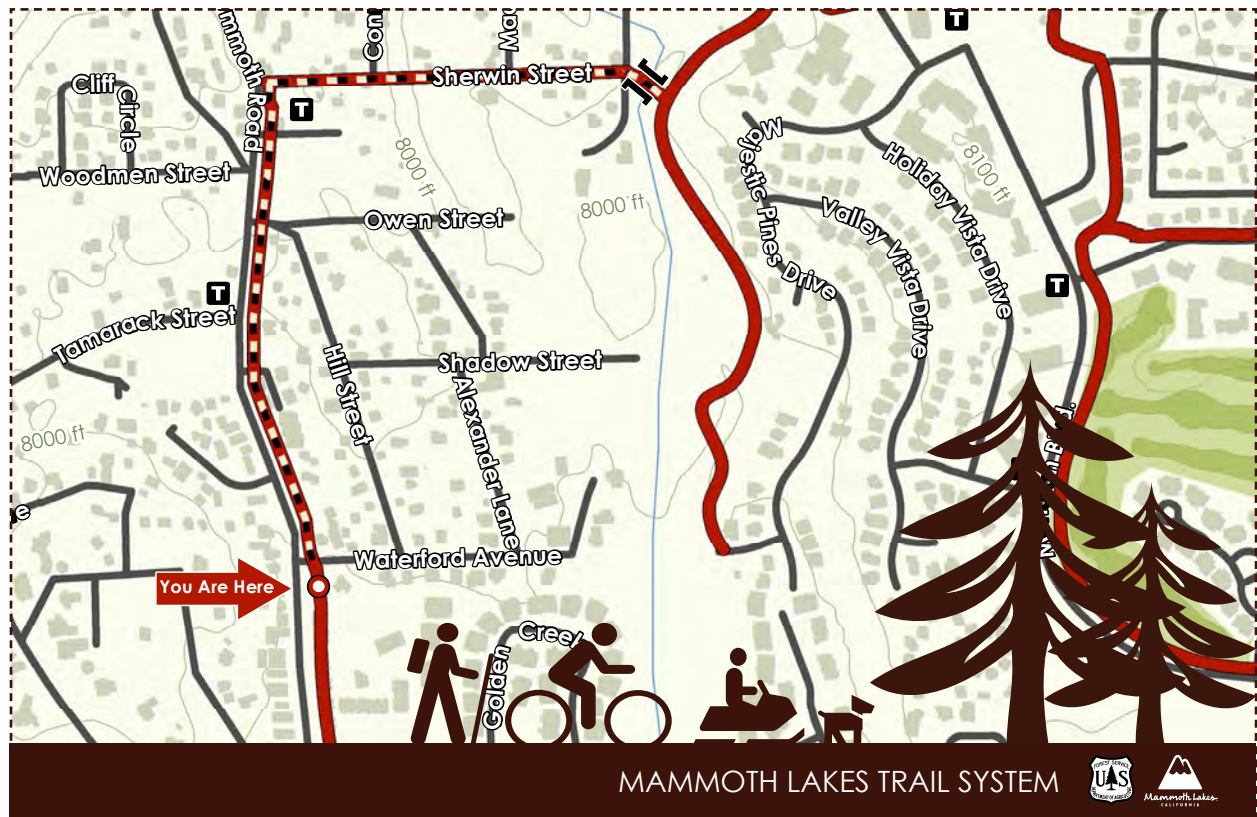
<b>Project No.</b>	<b>Street</b>	<b>From</b>	<b>To</b>	<b>Length (LF)</b>	<b>Unit Cost</b>	<b>Capital Cost</b>	<b>Maintenance Cost</b>
B 2-1	Minaret Road	Mammoth Scenic Loop	Mammoth Knolls Dr	3,096	\$ 57	\$ 176,472	\$ 1,994
B 2-2	Minaret Road	Mammoth Knolls Dr	Main St	2,058	\$ 95	\$ 195,510	\$ 1,325
B 2-3	Lake Mary Road	Davison Rd	Minaret Rd	2,71	\$ 10	\$ 25,774	\$ 1,747
B 2-4	Meridian Blvd.	S Majestic Pines Drive	N Majestic Pines Dr	49	\$ 10	\$ 6,166	\$ 418
B 2-5	Meridian Blvd.	Sierra Park Rd	Highway 203	6,9 6	\$ 10	\$ 65,892	\$ 4,466
B 2-6	Old Mammoth Road	Red Fir Road	Minaret Road	7,419	\$ 10	\$ 70,481	\$ 4,777
B 2-7	Old Mammoth Road	Main Street	Mammoth Creek Park	396	\$ 95	\$ 417,620	\$ 2,831
B 3-1	Forest Trail	Minaret Road	Canyon Blvd	5,599	\$ 57	\$ 319,143	\$ 3,605
B 3-2	Canyon Blvd.	Lake Mary Road	Hillside Drive	5,624	\$ 50	\$ 281,200	\$ 3,622
B 3-3	Lakeview Blvd.	Rainbow Lane	Canyon Blvd	2,635	\$ 57	\$ 150,195	\$ 1,697
B 3-4	Majestic Pines Drive	Silver Tip Lane	Lodes ar Drive	2,459	\$ 57	\$ 108,471	\$ 1,225
B 3-5	Chateau Road	Minaret Road	End	2,991	\$ 57	\$ 170,487	\$ 1,926
B 3-6	Sierra Nevada Road	Azimuth Drive	S erra Park Road	764	\$ 57	\$ 43,548	\$ 492
B 3-7	Laurel Mountain Road	Main Street	Sierra N evada Road	1,826	\$ 57	\$ 104,082	\$ 1,176
B 3-8	Tavern Road	Laurel Mountain Ro d	Sierra Park Road	83	\$ 57	\$ 67,431	\$ 762
B 3-9	Sierra Manor Road	Tavern Road	Meridian Blvd	,716	\$ 57	\$ 97,812	\$ 1,105
B 3-10	Sierra Park Road	Main Street	End	3,190	\$ 57	\$ 181,830	\$ 2,054
B 3-11	Kelley Road	Lake Mary Road	Majestic Pines	1,254			
B 3-12	S. Majestic Pines Drive	Meridian Blvd	Waterford Street	2,622			
B 4-1	Forest Trail	Canyon Bl d	L keview Blvd	3,115	\$ 4	\$ 12,460	\$ 295
B 4-2	Majestic Pines Drive	Silver Tip L ne	Lodestar Drive	1 903	\$ 4	\$ 7,612	\$ 180
B 4-3	North Waterford Ave.	Maj stic Pin s Drive	Old Mammoth Road	1,268	\$ 4	\$ 5,072	\$ 120
B 4-5	Davison Road	Lake Mary Ro d	Lakeview Blvd	3,130			
B 5-1	Sherwin Creek Road	Borro Pit	Highway 395	26,177			
			<b>TOTAL LENGTH</b>	<b>94,723</b>	<b>TOTAL COST</b>	<b>\$ 2,507,258</b>	<b>\$ 35,817</b>
				<b>17.9 MI</b>			

**TOML/MLTS Draft CIP  
Crossing Improvements Cost Estimates**

<b>Project No.</b>	<b>Street</b>	<b>Location</b>	<b>Improvement Type</b>	<b>Capital Cost</b>	<b>Maintenance Cost</b>
X 2-1	Minaret Road	Forest Trail	At-Grade Crossing	\$ 50,000	\$ 2,000
X 2-2	Minaret Road	North Village (Mid Block)	At-Grade Crossing	\$ 10,000	
X 2-3	Lake Mary Road	Davison Road	At-Grade Crossing	\$ 50,000	\$ 2,000
X 2-4	Lake Mary Road	Lakeview Road	At-Grade Crossing	\$ 50,000	\$ 2,000
X 2-5	Lake Mary Road	Canyon Boulevard	At-Grade Crossing	\$ 50,000	\$ 2,000
X 2-6	Lake Mary Road	Bridges Lane	At-Grade Crossing	\$ 50,000	\$ 2,000
X 2-7	Lake Mary Road	Lee Road	At-Grade Crossing	\$ 50,000	\$ 2,000
X 2-8	Main Street	Minaret Road	At-Grade Crossing	\$ 50,000	\$ 2,000
X 2-9	Main Street	Mountain Boulevard / Callahan Way	At-Grade Crossing	\$ 50,000	\$ 2,000
X 2-10	Main Street	Sierra Boulevard / Mon Street	At-Grade Crossing	\$ 50,000	\$ 2,000
X 2-11	Main Street	Forest Trail	At-Grade Crossing	\$ 50,000	\$ 2,000
X 2-12	Main Street (Hwy 203)	Sierra Park Road	At-Grade Crossing	\$ 50,000	\$ 2,000
X 2-13	Meridian Boulevard	Minaret Road	At-Grade Crossing	\$ 50,000	\$ 2,000
X 2-14	Meridian Boulevard	Sierra Park Road	At-Grade Crossing	\$ 50,000	\$ 2,000
X 2-15	Meridian Boulevard	College Parkway	At-Grade Crossing	\$ 50,000	\$ 2,000
X 2-16	Meridian Boulevard	Wagon Wheel Road	At-Grade Crossing	\$ 50,000	\$ 2,000
X 2-17	Old Mammoth Road	Chatou Road	At-Grade Crossing	\$ 50,000	\$ 2,000
X 2-18	Old Mammoth Road	Minaret Road	At-Grade Crossing	\$ 50,000	\$ 2,000
X 2-19	Old Mammoth Road	Ski Trail	At-Grade Crossing	\$ 50,000	\$ 2,000
X 2-20	Old Mammoth Road	Waterford Avenue	At-Grade Crossing	\$ 50,000	\$ 2,000
<b>TOTAL COST</b>				<b>\$ 960,000</b>	<b>\$ 38,000</b>

**TOML/MLTS Draft CIP  
SHARP Priority Projects**

<b>Project No.</b>	<b>Length (LF)</b>	<b>Improvement Type</b>	<b>Unit Cost</b>	<b>Capital Cost</b>	<b>Maintenance Cost</b>
S01 and W01		Multi-Use Staging Area	\$ -	\$ -	\$ 102,000
5b North	2,800	Soft-Surface Trail	\$ 5	\$ 14,000	\$ -
5b South	4,295	Soft-Surface Trail	\$ 5	\$ 21,475	\$ -
6	4,642	MUP	\$ 230	\$ 1,067,660	\$ 8,792
7	6,800	MUP	\$ 230	\$ 1,564,000	\$ 12,879
12b	1,074	Soft-Surface Trail	\$ 5	\$ 5,370	\$ -
13	2,000	Soft-Surface Trail	\$ 5	\$ 10,000	\$ -
14	3,184	Soft-Surface Trail	\$ 5	\$ 15,920	\$ -
15	1,506	Soft-Surface Trail	\$ 5	\$ 7,530	\$ -
		Bridge	\$ -	\$ -	\$ -
19 Panorama	-	Soft-Surface Trail	\$ 5	\$ -	\$ -
19 Solitude	-	Soft-Surface Trail	\$ 5	\$ -	\$ -
<b>TOTAL LENGTH</b>	<b>26,301 LF</b> <b>5.0 MI</b>		<b>TOTAL COST</b>	<b>\$ 2,705,955</b>	<b>\$ 123,670</b>



List of potential implementation projects for the near-term

Updated October 13, 2011







## Summer 2010 Final Report

Alignment Proposals for the Inyo National Forest and the Town of Mammoth Lakes

Map ID #S05b North

Map ID #S05b South

November 18, 2010



PO Box 100 PMB# 432  
Mammoth Lakes, CA 93546  
760 934 3154  
mltpa.org



**Map ID# S05b North Key Agreements  
As of October 27, 2010**

**A. Alignment:**

1. **Endpoints:** Safe crossing for Map ID# S05c/Start of Map ID #S15 on the Panorama Mountain Bike Trail
2. **Naming:** Mammoth City Trail (to be tied to interpretive opportunities along trail)
3. **Control Points/Narrative:** Beginning at the southwest endpoint of the trail at the safe crossing for Map ID #S05c (1), the trail travels roughly northeast via the Mammoth Community Water District water-tank access road 320 feet to the safe equestrian crossing (2), which it crosses. The trail then continues roughly northeast along the same Mammoth Community Water District water-tank access road 381 feet to the Mammoth Community Water District water tank (3), at which point it continues 465 feet along a new alignment, which features two climbing turns, to where it begins to parallel Old Mammoth Road (4). The trail then parallels Old Mammoth Road 891 feet through Mammoth City (5), where it begins to gain elevation roughly along a contour line 509 feet to reach a vista point on top of a rock band (6). The trail then heads immediately north, then switches back and down to the east via a series of turns 915 feet to terminate at the Panorama Mountain Bike Trail where it intersects with the start of Map ID #S15 (7).

**B. Design Specifications:**

1. **Trail Type:** Type 2 (preferred mountain bike)
2. **Users:** Non-motorized users
3. **Width:** See "Trail Type."
4. **Grade:** See "Trail Type."
5. **Surface:** See "Trail Type."
6. **Features:** None.
7. **User Experience/Aesthetics:** This trail features incredible views and helps to mitigate user conflict through its coordination with Map ID #S05b South and the trail's design. Interpretive opportunities abound.
8. **Trail Amenities:** None.

**C. Winter/Summer Interface:** None.

**D. Signage and Wayfinding Special Considerations:** Interpretive opportunities should be explored for topics including the local water system, the trail's intersection with Map ID #S05c, archeological sites, and the identified vista point.

**TO BE COMPLETED BY AGENCIES/JURISDICTIONS**



- A. Environmental Review**
- B. Construction & Maintenance**
- C. Funding Considerations & Ownership**
- D. Construction Cost Estimator**
  - a. **Total linear feet of new trail construction:** 2,800 linear feet
  - b. **Total estimated cost per linear foot:** \$5 per linear foot, with added cost for switchbacks
  - c. **Rehabilitation cost estimate:** N/A
  - d. **First-guess cost estimate:**
    - i. **Preferred Alignment:**
    - ii. **Alternative alignment:** N/A
- E. Other Special Considerations:** Archeological sites

# SHARP






Sherwins Area Recreation Plan

Trails Technical Committee

SHARP TTC: Map ID #S05b North

Map Draft Date 11/17/10

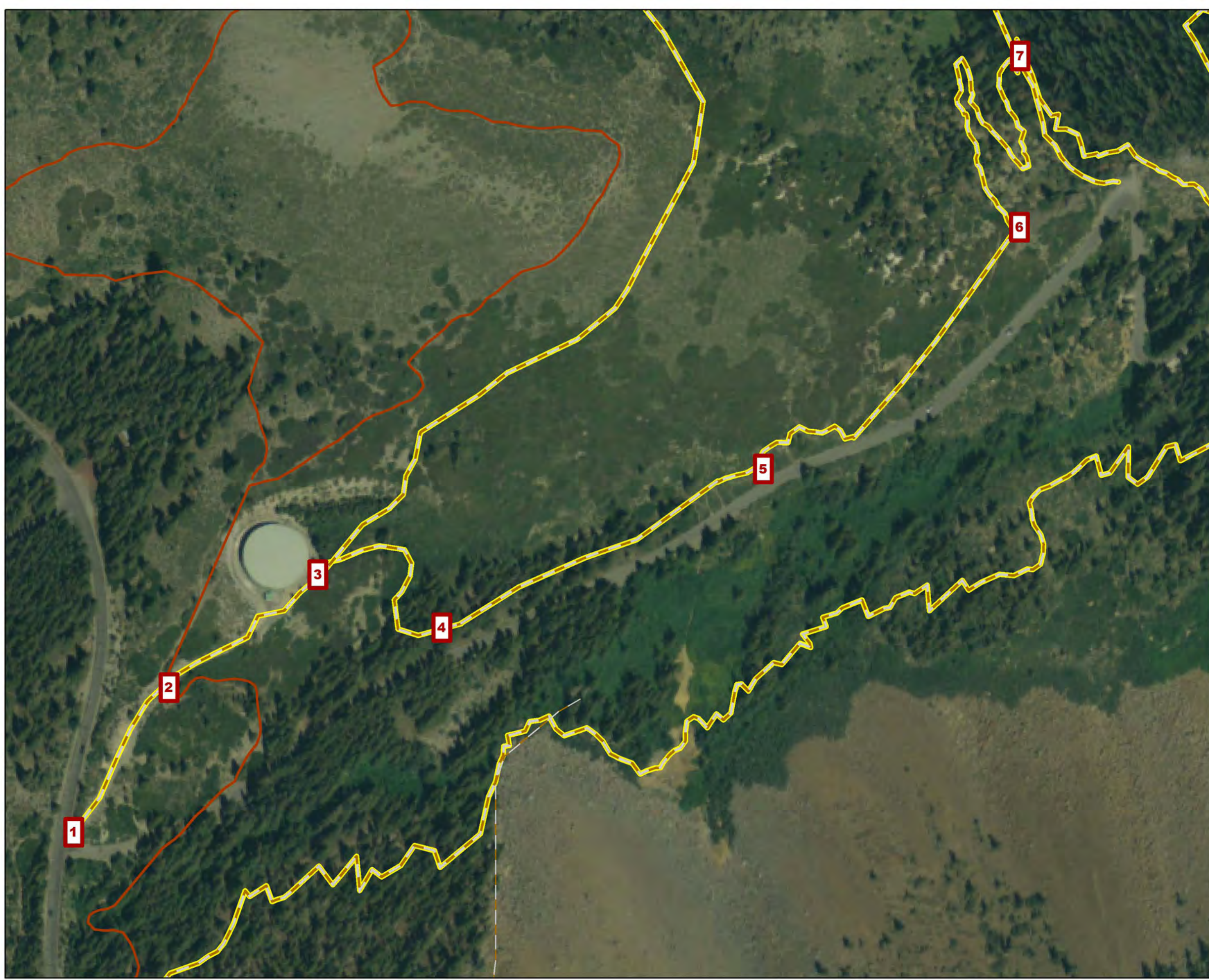
## Legend

-  SHARP TTC Trail Alignments
-  SHARP Proposed Trails
-  INF Trails
-  Centerlines
-  Control Points

Please see the SHARP TTC Project Coversheet and Key Agreements Documents for project details and Control Point definitions, as well as the Sherwins Area Recreation Plan (SHARP) for detailed concept and rationale.

### SHARP TTC

- The SHARP TTC is committed to staying true to the original wording and intent of the SHARP proposals, as crafted by the Sherwins Working Group, and will therefore not revisit or revise any part of any recommendation unless warranted by agency sideboards or other opportunities or constraints as identified by land management agencies such as the INF.
- This map is for informational purposes and may not have been prepared for, or be suitable for legal, engineering, or surveying purposes. Users of this information should review or consult the primary data and information sources to ascertain the usability of the information.



0 210 420 840 Feet





**Map ID# S05b South Key Agreements  
As of October 27, 2010**

**A. Alignment:**

1. **Endpoints:** Mammoth Rock Trail/Existing USFS system pack trail
2. **Naming:** To be determined.
3. **Control Points/Narrative:** Beginning at the southwest endpoint of the trail at the existing USFS system pack trail (1), the trail travels roughly northeast via the existing use trail 1845 feet to a riparian area (2) that will require mitigation. The trail then continues roughly northeast along the existing use trail 1390 feet to its intersection with 4S19b (3), which it crosses. The trail then continues as a new alignment 610 feet to the trail's terminus at Mammoth Rock Trail (4).

**B. Design Specifications:**

1. **Trail Type:** Hybrid of Type 2 (preferred equestrian) and Type 2 (preferred hike)
2. **Users:** Non-mechanized use
3. **Width:** See "Trail Type."
4. **Grade:** See "Trail Type."
5. **Surface:** See "Trail Type."
6. **Features:** None.
7. **User Experience/Aesthetics:** This trail is meant to offer early-spring access with low visual impact, beautiful views, and mitigation of user conflict by its coordination with Map ID# S05b North. This trail optimizes user experience by design and will accommodate all skill levels.
8. **Trail Amenities:** None.

**C. Winter/Summer Interface:** None.

**D. Signage and Wayfinding Special Considerations:** None.

**TO BE COMPLETED BY AGENCIES/JURISDICTIONS**

**A. Environmental Review**

**B. Construction & Maintenance**

**C. Funding Considerations & Ownership**

**D. Construction Cost Estimator**

- a. **Total linear feet of new trail construction:** 4,295 linear feet
- b. **Total estimated cost per linear foot:** \$3–\$5 per linear foot
- c. **Rehabilitation cost estimate:** To be determined.
- d. **First-guess cost estimate:**
  - i. **Preferred Alignment:**



**ii. Alternative alignment: N/A**

**E. Other Special Considerations: Goshawk habitat, mining claims**

# SHARP






Sherwins Area Recreation Plan

Trails Technical Committee

SHARP TTC: Map ID #S05b South

Map Draft Date 11/17/10

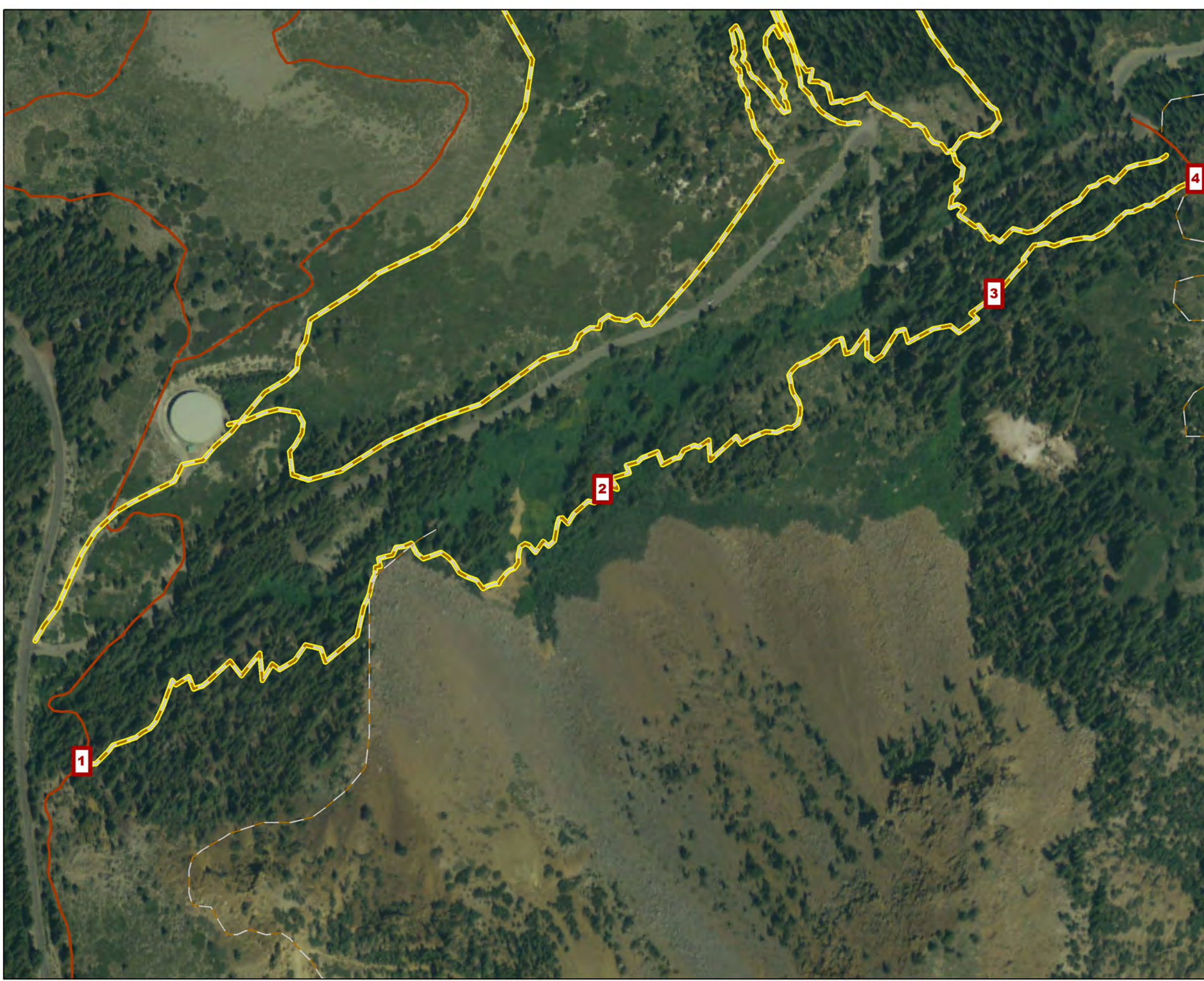
## Legend

-  SHARP TTC Trail Alignments
-  SHARP Proposed Trails
-  INF Trails
-  Centerlines
-  Control Points

Please see the SHARP TTC Project Coversheet and Key Agreements Documents for project details and Control Point definitions, as well as the Sherwins Area Recreation Plan (SHARP) for detailed concept and rationale.

## SHARP TTC

- The SHARP TTC is committed to staying true to the original wording and intent of the SHARP proposals, as crafted by the Sherwins Working Group, and will therefore not revisit or revise any part of any recommendation unless warranted by agency sideboards or other opportunities or constraints as identified by land management agencies such as the INF.
- This map is for informational purposes and may not have been prepared for, or be suitable for legal, engineering, or surveying purposes. Users of this information should review or consult the primary data and information sources to ascertain the usability of the information.



0 262.5 525 1,050 Feet





## Summer 2010 Final Report

Alignment Proposals for the Inyo National Forest and the Town of Mammoth Lakes

Map ID #S13

November 18, 2010



PO Box 100 PMB# 432  
Mammoth Lakes, CA 93546  
760 934 3154  
mltpa.org





## Map ID# S13 Key Agreements As of July 13, 2010

**A. Alignment:** This trail is meant primarily as a connector to the Mammoth Rock Trail. The alignment described below is still in draft form, and the SHARP TTC looks forward to working more closely with USFS trail specialists to improve the trail's sinuosity and aesthetics.

- 1. Trailhead and Destination(s):** Borrow Pit Staging Area/Mammoth Rock Trail
- 2. Naming:** Sherwin Gateway Trail; Rock Trail Express.
- 3. Control Points:** The trail begins at the South Borrow Pit Trailhead (1), which also provides access to Map ID #S06 and Map ID #S07, and heads south up the existing closed USFS Road 4S106. At the start of the trail, two options exist (2) to maintain desired grades and control downhill speed into the trailhead. The preferred alignment heads south and switches back to the east to rejoin the existing closed road, providing pleasing views to the south and west at the beginning of the trail experience and connecting directly into Map ID #S06. The alternative alignment (Alternative A) heads east and then switches back to the south to rejoin USFS Road 4S106. Where the two options rejoin USFS Road 4S106 (3), the trail then continues south, following USFS Road 4S106 for 256 feet, at which point the trail veers east (4) to reach a grouping of trees that provides pleasing aesthetics and shade while avoiding the steep grade present on USFS Road 4S106 (5). The alignment then heads southwest for 310 feet to an opening in the grouping of trees (6), again avoiding the steep grade present on USFS Road 4S106 and presenting pleasing aesthetics and shade. At this point the alignment converges with and follows an existing game trail (7), heading east toward a large tree (8). The trail will dip below the tree to maintain the desired grade, protect the tree from potential erosion from impact upslope, and prepare for an optimal crossing back over USFS Road 4S106 toward a large boulder (9). Once the trail crosses USFS Road 4S106, it will continue east to a switchback point (10) that bends southwest to maintain the desired grade. The trail continues southwest for 216 feet, again crossing USFS Road 4S106, to another switchback point (11). The alignment then heads east to the top of the ridge (12), which offers a pleasing viewpoint. From this point there are two options to join this connector with Mammoth Rock Trail. The preferred alignment continues south along the ridgeline to a decision point just north of an existing use trail (13), then descends due south for 88 feet to join an existing use trail (14) that continues 159 feet to intersect with Mammoth Rock Trail (15). The alternative alignment (Alternative B) heads south for 118 feet and joins an existing use trail (16) that continues 185 feet to Mammoth Rock Trail (17). A third alternative alignment (Alternative C) departs the preferred alignment at



the decision point (13) and continues southwest up the ridge for 546 feet (18) before turning south and descending 310 feet to Mammoth Rock Trail (19).

**4. Map Reference:** SHARP TTC: Map ID #S13, 08/03/2010

## **B. Design Specifications**

- 1. Trail Type:** Type 2 (preferred mountain bike)
- 2. Users:** Non-motorized
- 3. Width:** See "Trail Type."
- 4. Grade:** See "Trail Type."
- 5. Surface:** See "Trail Type."
- 6. Features:** See control points. Preventative measures will be taken to prevent cutting of switchbacks and use of the existing unsustainable use trail and USFS Road 4S106.
- 7. User Experience/Aesthetics:** This trail exhibits good examples of manzanita communities on the east side of the Sierra, provides excellent views of Mammoth Rock, rehabilitates the existing road "scar," and offers an introduction to the backcountry/soft-surface trail experience.
- 8. Trail Amenities:** As directed by the *Mammoth Lakes Trail System Wayfinding and Signage Standards Manual*

**C. Winter/Summer Interface:** No winter facilities are in apparent conflict with this project, though it is proximate to the proposed snowplay area. If possible, it is desirable to compact snow in this area at the beginning of the trail to access the snowplay area. In this case, accommodation of a snowcat should be considered when planning rehabilitation of USFS Road 4S106 in this area.

**D. Signage and Wayfinding Special Considerations:** As directed by the *Mammoth Lakes Trail System Wayfinding and Signage Standards Manual*. Additionally, there is the possibility to implement interpretive signage related to the variety of vegetation and other natural features of the area, which could connect into a larger interpretive experience at the Borrow Pit Staging Area (Map ID #S01).

## **TO BE COMPLETED BY AGENCIES/JURISDICTIONS**

### **A. Environmental Review**

### **B. Construction & Maintenance**

### **C. Funding Considerations & Ownership**

### **D. Construction Cost Estimator**

- a. Total linear feet of preferred alignment:** Approximately 2,000 feet
- b. Total estimated cost per linear foot:** \$4–\$6 per linear foot



- c. **Rehabilitation cost estimate:** Approximately 1,600 linear feet
- d. **First-guess cost estimate:** \$25,000

**E. Other Special Considerations:** Possible Inyo National Forest Travel Management Plan implications for road closures in the area




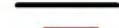

# SHARP

Sherwins Area Recreation Plan  
Trails Technical Committee

SHARP TTC: Map ID #S13

Map Draft Date 11/17/10

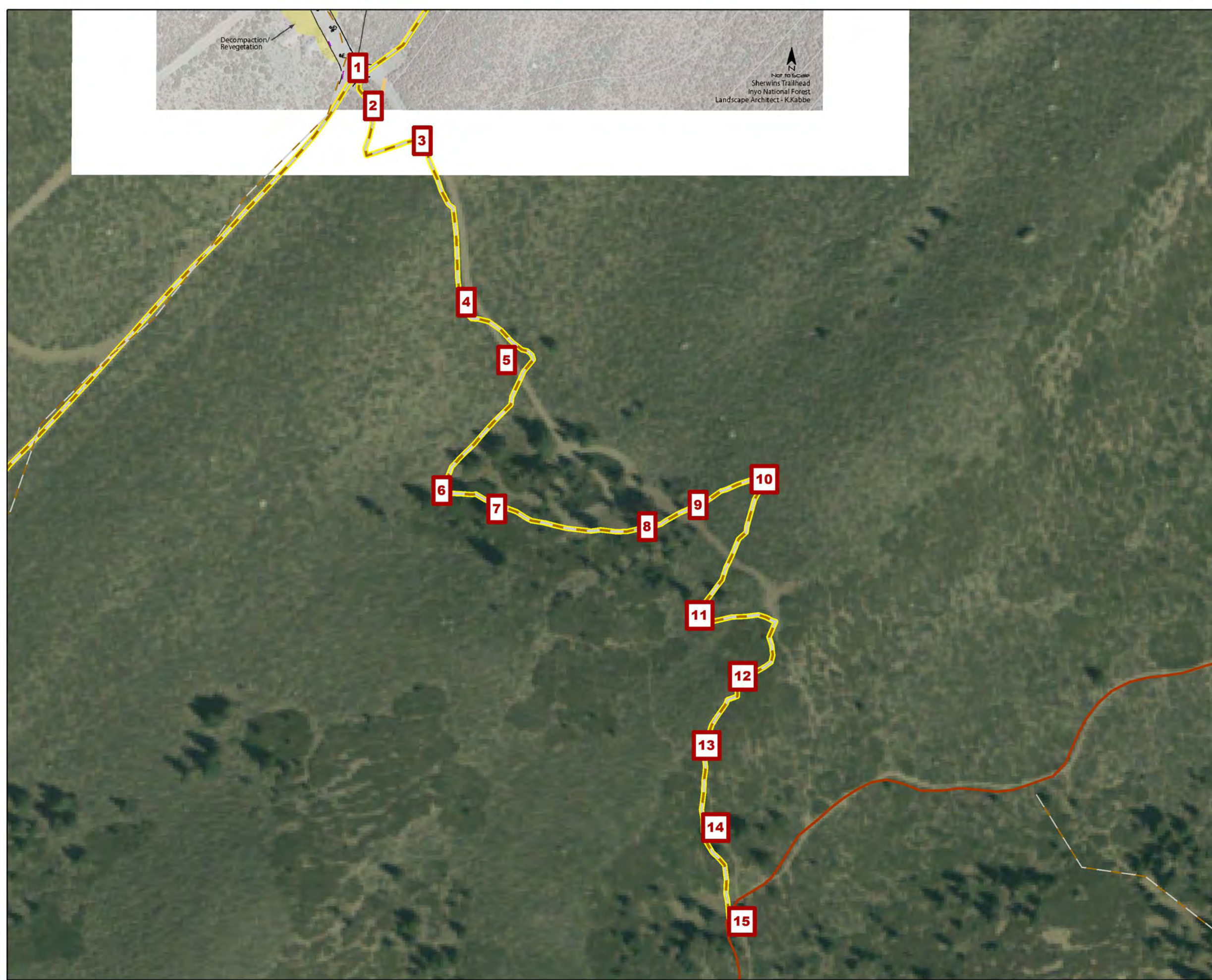
## Legend

-  SHARP TTC Trail Alignments
-  SHARP Proposed Trails
-  INF Trails
-  Centerlines
-  Control Points

Please see the SHARP TTC Project Coversheet and Key Agreements Documents for project details and Control Point definitions, as well as the Sherwins Area Recreation Plan (SHARP) for detailed concept and rationale.

### SHARP TTC

- The SHARP TTC is committed to staying true to the original wording and intent of the SHARP proposals, as crafted by the Sherwins Working Group, and will therefore not revisit or revise any part of any recommendation unless warranted by agency sideboards or other opportunities or constraints as identified by land management agencies such as the INF.
- This map is for informational purposes and may not have been prepared for, or be suitable for legal, engineering, or surveying purposes. Users of this information should review or consult the primary data and information sources to ascertain the usability of the information.



0 145 290 580 Feet





## Summer 2010 Final Report

Alignment Proposals for the Inyo National Forest and the Town of Mammoth Lakes

Map ID #S15

November 18, 2010



PO Box 100 PMB# 432  
Mammoth Lakes, CA 93546  
760 934 3154  
mltpa.org



## Map ID# S15 Key Agreements As of October 27, 2010

### A. Alignment:

1. **Endpoints:** Intersection of Map ID# S05b North and Panorama Mountain Bike Trail/Mammoth Rock Trail
2. **Naming:** To be determined.
3. **Control Points/Narrative:** From the western endpoint of the trail at the intersection of Map ID# S05b North and Panorama Mountain Bike Trail (1), the trail heads roughly southeast 377 feet to the base of the current Old Mammoth Road hairpin turn at the terminus of the Panorama Mountain Bike Trail (2). The trail then continues southeast 228 feet through a clearing to the start of Map ID #S14 at the existing use trail (3). The trail crosses that point and heads southeast 75 feet down toward the forested area to a point just south of the power lines, at the edge of the gully formed by the drainage (4). At this point the trail bends to the west along a natural bench 73 feet to the identified bridge location (5), which it crosses. The trail then crosses Old Mammoth Road (6) and travels 133 feet making one to two climbing turns to the south before joining the existing use trail paralleling Map ID# S05b South (7). The trail travels a final 521 feet to its termination at the Mammoth Rock Trail (8).

### B. Design Specifications:

1. **Trail Type:** Type 2 (preferred mountain bike)
2. **Users:** Non-motorized users
3. **Width:** See "Trail Type."
4. **Grade:** See "Trail Type."
5. **Surface:** See "Trail Type."
6. **Features:** 32-foot bridge
7. **User Experience/Aesthetics:** This trail is meant primarily as a connector between the Panorama Mountain Bike Trail and the Mammoth Rock Trail, providing continuity of experience for the user. This trail will accommodate all skill levels, but does connect to more intermediate-level amenities.
8. **Trail Amenities:** None.

### C. Winter/Summer Interface: None.

### D. Signage and Wayfinding Special Considerations: None.



**TO BE COMPLETED BY AGENCIES/JURISDICTIONS**

**A. Environmental Review**

**B. Construction & Maintenance**

**C. Funding Considerations & Ownership**

**D. Construction Cost Estimator**

- a. **Total linear feet of new trail construction:** 1,506 linear feet
- b. **Total estimated cost per linear foot:** \$5 per linear foot, with additional cost for bridge construction
- c. **Rehabilitation cost estimate:** Approximately 100 linear feet of existing use trail that would otherwise connect with Map ID# S05b South, which is a non-mechanized trail, will need to be rehabilitated to prevent bicyclists from accessing a trail on which that use is prohibited.
- d. **First-guess cost estimate:**
  - i. **Preferred Alignment:**
  - ii. **Alternative alignment:**

**E. Other Special Considerations:** See "Rehabilitation cost estimate," above.

# SHARP






Sherwins Area Recreation Plan

Trails Technical Committee

SHARP TTC: Map ID #S15

Map Draft Date 11/17/10

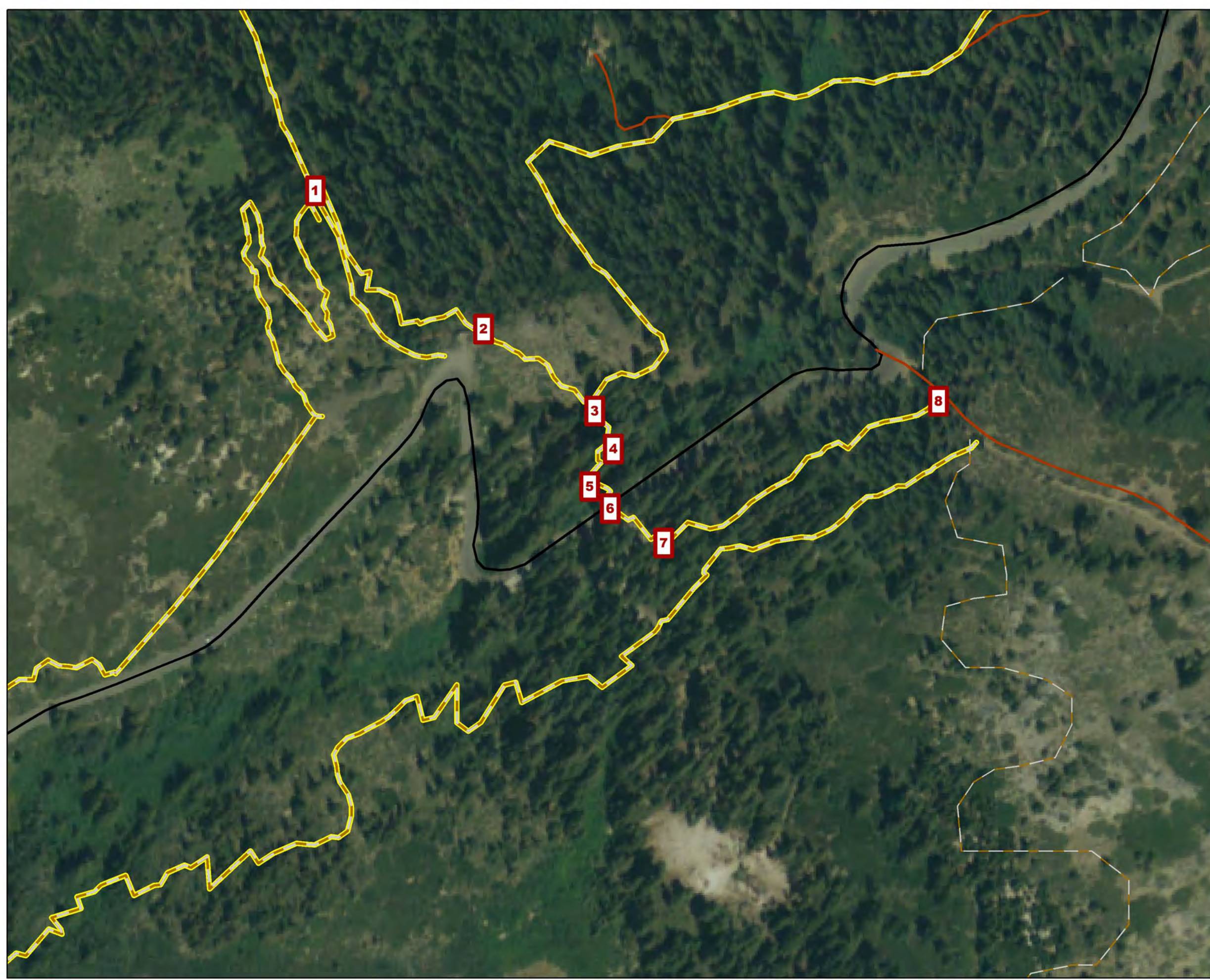
## Legend

-  SHARP TTC Trail Alignments
-  SHARP Proposed Trails
-  INF Trails
-  Centerlines
-  Control Points

Please see the SHARP TTC Project Coversheet and Key Agreements Documents for project details and Control Point definitions, as well as the Sherwins Area Recreation Plan (SHARP) for detailed concept and rationale.

## SHARP TTC

- The SHARP TTC is committed to staying true to the original wording and intent of the SHARP proposals, as crafted by the Sherwins Working Group, and will therefore not revisit or revise any part of any recommendation unless warranted by agency sideboards or other opportunities or constraints as identified by land management agencies such as the INF.
- This map is for informational purposes and may not have been prepared for, or be suitable for legal, engineering, or surveying purposes. Users of this information should review or consult the primary data and information sources to ascertain the usability of the information.



0 170 340 680 Feet

