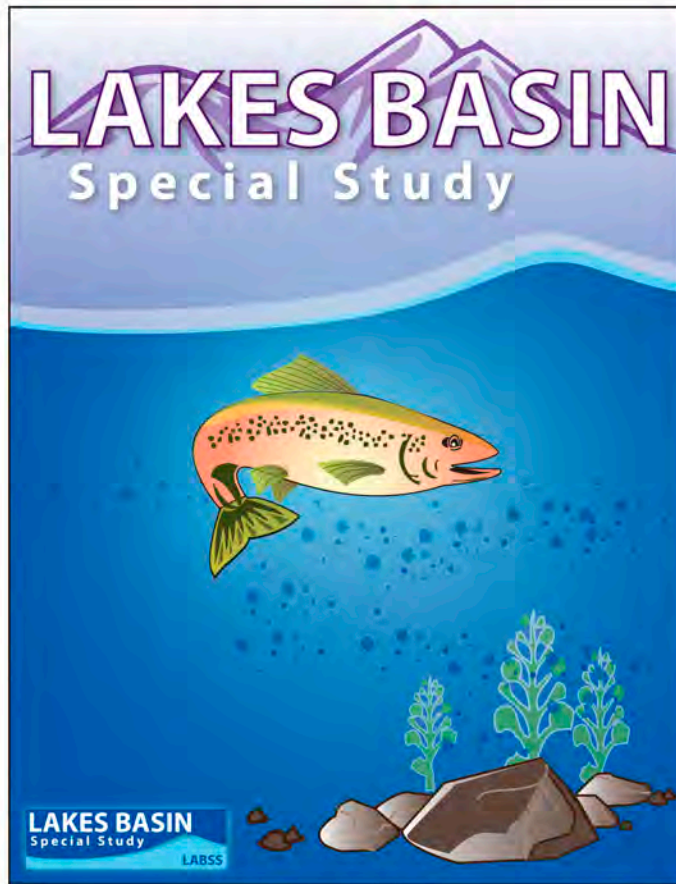




## **LABSS Supplemental Materials**

USFS Mammoth Lakes Recreation Area, Recreation Management Plan (undated)



## Lakes Basin Special Study

“USFS Mammoth Lakes Recreation Area, Recreation Management Plan” - INF

(not dated)

*This management plan represents a comprehensive assessment of the recreation opportunities in the Mammoth Lakes Recreation Area. The plan identifies the current capacity of existing facilities, site development needs, and policy considerations.*

LABSS Document Library  
Compiled August 12, 2010





# RECREATION MANAGEMENT PLAN

---

## MAMMOTH LAKES RECREATION AREA

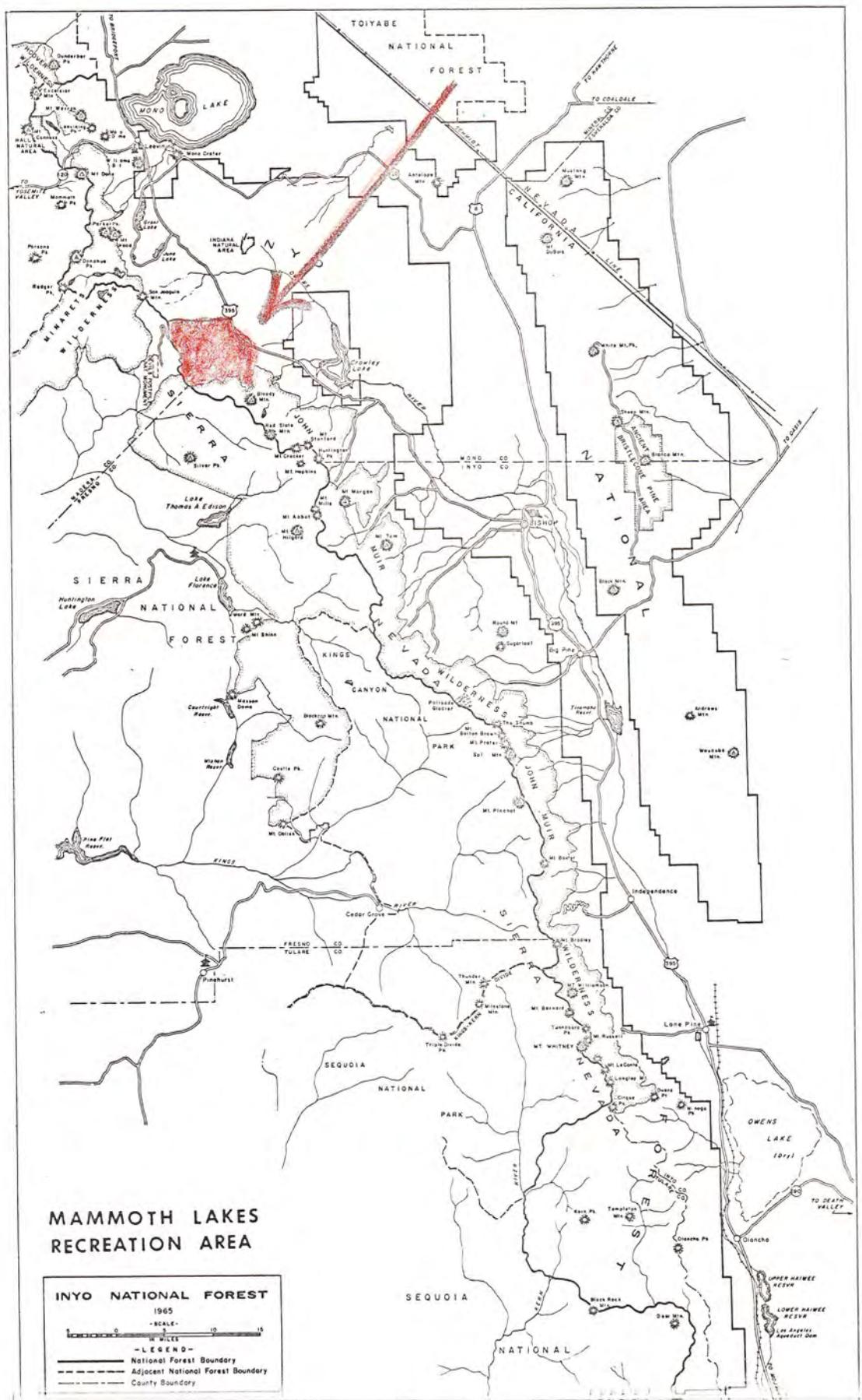


---

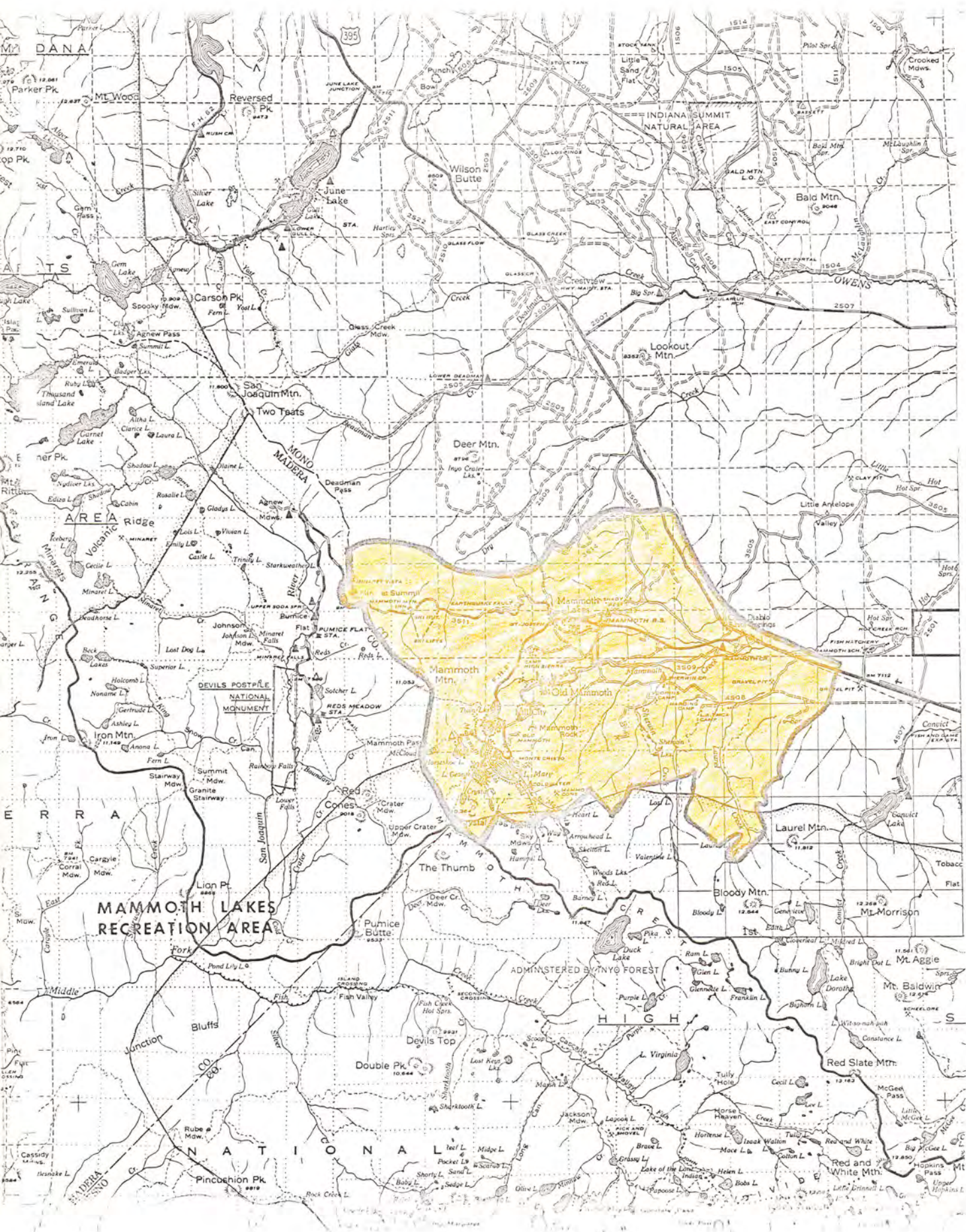
INYO NATIONAL FOREST

CALIFORNIA REGION











## JOB LIST

### MAMMOTH LAKES AREA PLAN

1. Coordinate all developments in the area with protection of the natural environment. District Ranger maintain in annual work plans.
2. Be alert to opportunities to exchange for any parcels listed under key areas for acquisition. District Ranger and Forest Lands Staff Officer maintain in annual plans of work.
3. Eliminate mining claims in Coldwater Campground. District Ranger by 1968.
4. Lay out a cross county ski trail and draw up a diagramatic hand out map. District Ranger by 1968.
5. Lay out routes for over the snow mechanized vehicles and draw up a diagramatic hand out map. District Ranger by 1968.
6. Keep upper portion of Laurel Creek Mine Road closed to public vehicular travel. District Ranger maintain in annual work plans.
7. Protect all trees of aesthetic value, geological features, and historical remains in area. District Ranger maintain in annual work plans.
8. Relocate trail to Heart Lake. District Ranger 1970.
9. Relocate Mammoth Pack outfit ~~across highway~~. District Ranger by 1976.
10. Issue permit for development of site 343 as a community recreation center. Forest Lands Officer and District Ranger by 1976.
11. Issue a prospectus for the development of Sherwin Bowl site 87. Forest Lands Officer and District Ranger 1976.

# AREA PLAN

MAMMOTH LAKES

RECREATION AREA

Inyo

NATIONAL FOREST

Mammoth

RANGER DISTRICT

APPROVAL

DISTRICT RANGER

DATE

FOREST SUPERVISOR

DATE

REGIONAL FORESTER

DATE

## 1. GENERAL SITUATION ( FSH 2313.21)

### A. LOCATION

1. WITHIN FOREST In the northwest portion of the Forest. In the Mammoth Creek drainage on the east escarpment of the Sierra.

### 2. DISTANCE FROM MAIN TRAVEL ROUTES - MILES

The area is bounded on the northeast by U.S. Route 395 and is intersected by the Mammoth Lakes highway.

### 3. DISTANCE FROM CITIES, TOWNS - SOURCE OF USER

42 miles north of Bishop, Calif. - 1 hour driving time  
200 miles south of Reno, Nevada - 3 hour driving time  
280 miles north of Los Angeles complex - 5 hours driving time

### B. DESCRIPTION

1. ELEVATION - RANGE FROM 7,200 To 11,053 Use AREA 7,200 to 10,400

2. GENERAL CHARACTER Extends from the crest of the Sierra to a timbered basin with numerous lakes and eastward to a relatively broad valley bounded on the south by towering peaks and on the north by a ridge with seven dome shaped peaks.

3. COVER TYPES Extends from the transition Life Zone to the Arctic Alpine Zone. 25% Sage, bitterbrush, grass. 20% Jeffrey pine, 15% Red fir and Lodgepole pine. 20% Lodgepole pine, Red fir, Mtn. hemlock, White pine. 5% Aspen and Willow, 10% Whitebark and Limber pine. 5% Barren rock.

### 4. TOPOGRAPHY

See insert page 1A

5. MEAN TEMPERATURE - MID-JULY DAY 80° F NIGHT 45° F

### C. RECREATION OPPORTUNITIES

1. PRINCIPLE ATTRACTION The cool spectacular scenic environment with its numerous fishing waters and the outstanding skiing terrain on Mammoth Mountain.

### 2. OTHER ATTRACTIONS

Hunting, history and natural history.

### D. USE

#### 1. VISITOR DAYS PER YEAR

ESTABLISHED 1,050,000 PLANNED (INCL. ESTAB.) 2,500,000

#### 2. SEASON OF USE - DATES

SUMMER May To October WINTER November To June



4. Topography The Mammoth Lakes Basin is a combination of the processes of volcanic and glacial activity. The south and west portions of the area are dominated by a spectacular backdrop of high mountain peaks outlining several glacial cirques. The western part of this glaciated area contains a group of lakes.

The northwestern portion of the area is dominated by the volcanic dome of Mammoth Mountain. This volcanic terrain extends on to the east and covers the north portion of the area with a ridge broken up by several volcanic domes.

The central and eastern part of the area is a combination of glacial moraines and low lava hills and bluffs. This section is bisected by Mammoth Creek.



2108.75 Town  
210.00 Lake Area  
2318.75

Mammoth area  
private land

4-27-70

MAMMOTH LAKES AREA PLAN

D. USE (CONT.)

3. CAPACITY - PERSONS AT ONE TIME

	ESTABLISHED	GOVERNMENT	PRIVATE	TOTAL
CAMP		2,932	-	2,932
PICNIC		280	-	280
ORGANIZATION		420	-	420
SUMMER HOME		717	2,500	3,217
RESORT		2,280	2,300	4,580
WINTER SPORTS SKI		10,000	-	10,000
WINTER SPORTS SNOW PLAY		200	-	200
		600	-	600
TOTAL		17,429	4,800	22,229

Swimming  
Observation

PLANNED Including Established Sites and Anticipated Acquisitions

CAMP	10,052	-	10,052
PICNIC	1,428	-	1,428
ORGANIZATION	1,070	-	1,070
SUMMER HOME	550	4,000	4,550
RESORT	2,500	6,000	8,500
WINTER SPORTS SKI	25,000	-	25,000
WINTER SPORTS SNOW PLAY	500	-	500
	300	-	300
TOTAL	43,650	10,000	53,650

Swimming  
Observation

4. SERVICES - STORES, BOAT LAUNCHING, ETC.

ESTABLISHED GOV'T. 11 PRIVATE 2 TOTAL 13

ADEQUACY Most additional needs will be met on private land in Mammoth Community

PLANNED NUMBER SITES GOV'T. PRIVATE TOTAL

5. BACKGROUND HISTORY OF USE

See Insert Page 2A

E. LAND ACRES ( EXCLUDE WATER SURFACE )

1. OWNERSHIP	DEVELOPMENT SITES	RECREATION AREA TOTAL
Area in Zones	EST. AND POTENTIAL	WITHIN FINAL BOUNDARY
NATIONAL FOREST 3,980	5,830	24,000
OTHER PUBLIC	115	1,785
PRIVATE	1,600	1979 2,015 2,049
TOTAL	7,545	27,804

204  
160  
130  
270

2. KEY AREAS FOR ACQUISITION

SECTION	TPS.	RANGE	ACRES	PURPOSE
8	4S	27E	80	Camp and picnic use & water front
17	4S	27E	80	" " " " " "
16	4S	27E	60+	" " " " " "
15	4S	27E	32+	Protect Scenic Backdrop
9	4S	27E	26+	" " " " " "

REMARKS: 6 4S 28E 120 Campground -(City LA Land)

Sections 8 and 17 - Title to the parcel is clouded



#### D. 5 Background History of Use

Prior to the coming of white man the area was used by the Piute Indians for generations.

An archaeological excavation of Mammoth Creek Cave (site 83) was conducted by the Eastern California Museum in 1962 and 1963. The data obtained suggests an Indian occupational time-span in excess of 700 years, encompassing two or possibly three cultural periods.

Red Mountain in the southwest portion of the area was the scene of a mining boom from 1878 to 1880. This activity resulted in several mining camps springing up in the vicinity, they were Mammoth City, Pine City, Mill City, and Mineral Park.

The Mammoth Mining Company drove four tunnels into Red Mountain's north slope. A 20 stamp mill was erected nearby to process the ore and dams were constructed on Lake Mary and Twin Lakes to provide water power. The company spent \$300,000 to produce \$200,000 worth of gold. The mine shut down in 1880.

In the 1890's a Judge Doyle of Chicago built a 10 stamp mill and reopened the mines on Red Mountain. They did not pay and only sporadic activity has continued to the present.

Other mines have been operated on the southwest slope of Red Mountain from the 1890's to the present. They include the Monte Cristo and the Mammoth Consolidated. Near the northeast shore of Lake Mary is the remains of a water powered arrastra mill dating back to 1890.

The first road in the area was constructed during the fall of 1878 and the spring of 1879 to connect the mine community of Pine City with Owens Valley. This road was operated for a number of years as a toll road by one of the builders, James L. C. Sherwin. Mr. Sherwin later came into entire possession of the road, but abandoned the project when the county wouldn't accept the responsibility for its maintenance.

Several hundred acres of <sup>TIMBER</sup>land in the vicinity of Lake Mary and the Community of Old Mammoth were cut over for use in the construction of the mines and mining camps. A large amount of cutting was also carried out for fuel wood.

Two sawmills are reported to have been built on Laurel Creek in 1879 and operated for five years. A shake mill was operated during this period by James Sherwin, in the vicinity of the Voorhis Viking Camp (site 229).

In 1891, Mr. C. F. Wildasin built a double circular water powered sawmill on Mammoth Creek (~~see site 83~~) with a capacity of 6,000 board feet per day. It employed six men from July 1 to October 1, cutting from 180,000 to 300,000 feet per season. Seasonal operation was continuous into the early 1900's supplying lumber for Owens Valley. Logging was carried out in the immediate vicinity with horses and trucks. Over 200 acres were cut.



Mr. White Smith, an attorney of Bishop, acting for an association of Bishop businessmen purchased the Wildasin Mill on Mammoth Creek about 1907. A New York lumberman named Bradley was also involved in the operation. Lumber continued to be produced for the Owens Valley market.

About 1925, a steam powered sawmill was built near the present Mammoth Ranger Station. This mill operated into the late 1930's supplying lumber to the Owens Valley market. Arthur Hess of Bishop, owned the mill and was succeeded by the Inyo Lumber Company, who transferred the production to a mill in Round Valley, near Bishop.

Mr. C. F. Wildasin grazed cattle in the area and operated a small hotel, as well as the sawmill, during the early 1900's.

The Charles Summers family were cattlemen who settled in the area around 1900 and maintained a herd of about 1400 head in the basin. In 1918, the Summers built a hotel on Mammoth Creek near the present community of Old Mammoth.

Roving bands of 1,000 to 2,500 head of sheep moved through the area in the early 1900's.

A power development was proposed for the basin in 1920, by a Mr. Henry J. Pierce who had 1,500 acres bordering Lake Mary, Mamie, George, Twin and Mammoth Creek, ~~These~~ withdrawn under Federal Power Commission application number 76, filed on October 25, 1920. The plan included diversion of water from Lake Arrowhead to power plant #1 on the southeast side of Lake Mary. Plant #2 was to be located at the south end of Twin Lakes. Plant #3 was to be constructed on Mammoth Creek below Twin Lakes and plant #4 was to be situated near the present Mammoth Creek Campground (site 159). Conduit flow lines were to transport the water from one plant to the next.

An alternate proposal was to construct a tunnel from Lake Mary to the base of Mammoth Rock where a generating plant would be built. The power was to be transmitted to Los Angeles.

The F.P.C. withdrawal was cancelled on June 20, 1922 for failure to proceed with work on the project.

In 1928, winter freight and passenger service by dog sled was inaugurated into the area. This lasted until World War II and enabled a few residents to live the year around in Mammoth.

During the early 1930's the Forest Service improved and constructed roads leading to the Mammoth Lakes group and constructed trails to the more important remote lakes adjacent to the area.



In 1933 and 1934 the Forest Service constructed control dams on Lake Mary, Mamie, and Twin Lakes for purposes of improving recreation. These dams were earth fill with provisions for a 24 foot roadway across the top. The Lake Mamie and Twin Lakes dams were expected to carry the proposed highway to the Devils Postpile. Each dam was provided with a masonry spillway and log control gates for a fluctuation of three feet.

The present all year highway was constructed in 1937 and the center of activity in the area shifted from Mammoth Creek north to its existing location on the new highway.

## MAMMOTH LAKES

## AREA PLAN

3. MINING CLAIMS - EXTENT, KEY AREAS AFFECTED, ETC. (see page 3A insert)  
On site 129.5 and in the vicinity of site 128, Placer claims have been established, that are primarily to hold the land for natural steam. These claims are held in connection with a natural steam power project at Casa Diablo that has not been productive to date.

## II. COORDINATION (FSH 2313-2323)

A. LAND USE PLAN ZONE -- Mammoth Unit Mammoth Lakes Unit Crowley Lake Unit

## B. WATER

1. LAKES - NAME AND ACRES McLeod 9.5A Horseshoe 80 Barrett 8  
Laurel #1-3 @2-8 T. J. 8.6 Sherwin #1-7 #2-1 #3-3.9 #5-4 #6-1.5

2. RESERVOIRS	ACRES		AGENCY	CONSTRUCTION YEAR
	NAME	MIN. POOL	MAX. POOL	
	Lake Mary	40	69.5	F.S. 1933-34
	Lake Mamie	9	16.0	F.S. 1933-34
	Twin Lakes	70	75.0	F.S. 1933-34

RELEASES - DATES AND C. F. S.  
PRESENT 12 Minimum

RECOMMENDED 12 Minimum

## 3. STREAMS Mammoth, Sherwin, Laurel, Coldwater, Crystal, T.J. Creeks

FLOW - AVERAGE YEAR 20 C. F. S. LOW YEAR 8 C. F. S.

MILES IN RECREATION AREA 23

## DOWNSTREAM USE

Enters city of Los Angeles aqueduct system at Crowley Lake

4. SOURCES FOR DEVELOPMENT SITE USE Mammoth Community water system used for Shady Rest sites Springs Sherwin Creek sites Springs, lakes and small streams Mammoth Lake Basin

5. REMARKS An increase in water holding capacity of the lakes will be needed before ultimate development is reached.

## C. TIMBER Mammoth Block and Deadman Block

1. WORKING CIRCLES Owens River

2. AREA - ACRES TOTAL 27,800

NON-FOREST - - - - -

12,255

FOREST - - - - -

16,300

COMMERCIAL - - - - -

6,700

SUB-TOT.

27,755

NON-COMMERCIAL - - - - -

8,845

PRODUCTIVE -

4,600

SUB-TOT.

15,545

OTHER - - -

7,655

SUB-TOT.

12,255

PAGE 3

R-5 - 2300-13

ISS. 6-62



E. 3 Mining Claims

Gold (Red) Mountain has three mines that date back to 1878. They are - The Old Mammoth, Monte Cristo, and Mammoth Consolidated. The Old Mammoth claims are patented. These mines do contain gold, however, the cost of processing is too great to make a profitable operation.

A revival of mining activity in 1958 at the Old Mammoth Mine brought on a series of complaints from campers and summer home owners about the disturbance of peace from frequent blasting.

Assesment work carried out on a group of claims held in the Coldwater Creek area has resulted in dangerous and unsightly holes within the campground.

A tungsten claim adjacent to site 87 presents no problem.

At the head of Laurel Creek is a tungsten claim that was reactivated in 1955. A road was constructed from an old wagon road on Laurel Creek to the prospect on the northwest slopes of Bloody Mountain. This claim has not been a producer. The road remains and is used by the California Department of Fish and Game to service their golden trout rearing program at Laurel Lakes. The road is steep and dangerous and should continue to be barred to public vehicle traffic above the junction with the two wheel vehicle trail to Sherwin Lakes.

Another tungsten claim exists at Way Lake in the John Muir Wilderness, with an access tractor trail from Coldwater Creek.

3. INSECT AND DISEASE PROBLEMS Insect losses fluctuate considerably. The California flat headed borer, ips, and Jeffrey pine beetle occasionally reach epidemic stage in the Jeffrey pine type. Inyo Rust on Jeffrey pine is the most important disease problem.

4. TIMBER CUTTING PRESCRIPTIONS (See insert dated April 1965)

SITES The prevailing winds are strong from the southwest. Marking techniques will consider strong winds. Fire salvage within year after any serious fire. Dead or dying from lightning should be cut. On any cutting, always use lowest stump possible.

SPECIAL AREAS No cutting (except as needed in facility construction) of the picturesque trees found in certain portions of the area primarily at the higher elevations including Juniper, Whitebark and Limber pine. This covers all trees of scenic value both dead and alive.

RECREATION ZONES

See insert - April 1965

5. OTHER UTILIZATION STANDARDS - SLASH, NON-CONVERTIBLE PRODUCTS, ETC. Cut dead and down to size for campfire use. Complete slash disposal by chipping-remove or burn unutilized logs. Obliterate all landings and skid trails. Issue free use permits to local persons for removal of concentrations.

D. RANGE	AUM	AUM	SEASON
	S AND G	C AND H	
1. ALLOTMENTS - NAME			
Hot Creek		805	6/16 - 9/30

2. COORDINATION ADJUSTMENTS NEEDED - KIND AND DATES

NONE

3. FENCE REQUIREMENTS - CHAINS A drift fence was constructed about 1962 on a line from site 82 south to site 228.  
SITES This was to alleviate the problem of cattle entering  
DRIFT site 225 and moving westward to Mammoth Village. This  
OTHER - CATTLE GUARDS, ETC. fence will need relocating to the east when site 84 is developed.

E. FIRE CONTROL

1. DANGER (AVERAGE WORST) F. D. R. ZONE 460 HOUR CONT. CLASS 1 hour

2. EXTRA-ORDINARY PREVENTION NEEDS - HAZARD REDUCTION - FUEL BREAKS, ETC. In the portion of the area east of Mammoth Village there is heavy sage cover. This will require construction of fire breaks around sites and removal of flash fuel from units.

F. SOILS Generally glacial till in the south third of the area, the upper two thirds of the area is overlain with pumice of varying depth.

1. GENERAL TYPES

2. DURABILITY - EROSION POTENTIAL H x M    L     
COMPACTION POTENTIAL H    M    L x

3. EXTRAORDINARY NEEDS FOR DEVELOPMENT - ENGINEERING STUDIES, SURFACING, ETC. All construction should consider heavy spring snow melt run off and summer cloud burst conditions. Snow avalanche should also be considered.

G. OTHER DEVELOPMENTS AFFECTING REC. VALUES - HWY, POWERLINE, ETC. The growth of the community of Mammoth is increasing the demand for day use developments.



**COORDINATION OF TIMBER USE AND RECREATION**  
SUMMARY FSM 2322, 2323, 2405.12, 2413, 2471 \*

**CLASSES OF RECREATION AREA**

Categories	Description	Treatment of Timber	Treatment of Slash	Supervision
1.	Developed sites - Facilities already constructed (include limited buffer). Include Cultural Sites (2322.6, .7, .8)	Mark all trees prior to sale or contract. Limit to following: a. Snags and other human hazards. b. Insect-infested trees. c. Diseased and infected trees in control project. d. Trees in R/W or construction areas according to site plan.	Up to 100% removal or disposal according to plan. May leave part for fuel according to plan. (2481.21)	Continuous on ground supervision all phases of operation to minimize damage to soil and cover.
2a.	Development sites planned for use within 10 years (include limited buffer).	Mark all trees. Limit to trees listed in Category I plus pine risk class III and IV on certain sites if adequate recreation stand remains.	Up to 100% removal or disposal according to plan. May leave part for fuel in accordance with plan.	Continuous on ground supervision, all phases of operation to minimize damage to soil and cover.
2b.	Development sites not planned for use within 10 years.	Mark all trees prior to sale or contract. Objective is to have an adequate stand for recreation use at time site is planned. Recreation use of "decadent" sites may be deferred if other sites are available. Precondition by thinning for crown and vigor.	Limited to needs of fire control. Special disposal plans required in special cases.	Continuous supervision during logging and road construction to minimize damage to residual trees.
3a.	Recreation zones - Road water-front and buffer not included in category I and 2a. FSH 2323.2	Special cutting to maintain or regenerate a health forest stand. Tree removal according to plans prepared (by the T.S.O. and recreation specialist) for the time and place.	Up to 100% in visible roadside and waterfront zones. Limit to fire control and channel clearing needs in remaining portions of zones	Continuous on ground supervision all phases of operation in visible roadside and waterfront general supervision remainder. Minimize damage and impact on aesthetic values.
3b.	View Areas - Scenic backdrops to highways and view points and lands in recreation areas not otherwise categorized.	Cut on normal silvicultural basis. Modify method of logging, time, size, and shape of cut areas to minimize impact on scenery.	Limit to needs for Fire Control and stream clearance.	General or special supervision as dictated by the operation and scenery involved--plan for special supervision when needed.
4.	Semi-Natural Areas Scenic, botanical trail, etc.	Not subject to ordinary timber sale. Remove trees only to protect or enhance special values.	In accordance with special plans, as needed.	Continuous supervision usually by recreation specialist.
5.	Wilderness Type Areas including virgin and areas listed in recreation plans for wilderness consideration.	No timber removal except for protection or rehabilitation as approved by Regional Forester or Chief.	Not applicable.	Not applicable.
6.	Other Areas Lands not in other categories.	No special provisions (except in special areas where land use plans specify special cutting).	Standard slash disposal practices.	Normal timber sale supervision.

\* Summary page, additional copies available for field use upon request.

APRIL 1965



MAMMOTH LAKES      AREA PLAN  
III. AREA DEVELOPMENT NEEDS

A. VISITOR INFORMATION SERVICE OPPORTUNITIES

1. CENTERS - LOCATION Mammoth Visitor Center site 140 KIND Forest vis headquarters  
Earthquake Fault Site 302, Indian Cave site 83 Display shelters  
Mammoth Basin site 128, Minaret Vista site 122  
Park Area site 190, Twin Lakes Vista site 311, Mammoth City site 245 Display shelters
2. RECOMMENDED V. I. S. IMPROVEMENTS - AMPHITHEATRES, SIGNS, TRAILS, OBSV. PTS.

See attachment page 5A

3. UNUSUAL INTEREST AREAS Sawmill Ridge Sherwin Lakes Juniper Grove site 342  
Indian Cave site 83 Sherwin Lakes Crystal Lake R.J. Lake Earthquake fault site 302  
Mammoth Mountain Minaret Vista site 122.5

B. ROAD REQUIREMENTS FOR AREA DEVELOPMENT

NAME AND NUMBER	PROPOSED STAND.	MILES			YEAR NEEDED
		BETTER.	CONSTR.	SURFACE	
Sawmill Ridge	DN	1	.5	1.5	1976
Sawmill Gap	DN	2		2	1976
Chinquapin Hill	DN	.5		.5	1976
Big Flat	DN	1			1976
Sherwin	DN		1.5		1980
Indian Cave	DN		1		1980

C. LAND USE ADJUSTMENTS

1. LOCATION OR SITE NO.	ACRES	KIND	NUMBER UNITS	FUTURE USE OR PURPOSE
MAMMOTH RANGER STATION TRACT 9	3	RES	11	PICNIC AND FISHING
SHERWIN CREEK 226	1	RES	4	" " "

2. REMARKS

D. SANITATION - KIND, SPECIAL NEEDS, ETC.

1. SEWAGE DISPOSAL Keep all types of toilets away from springs, streams, lakes and wet meadows to prevent water contamination. All pit toilets will be sealed vault.

2. GARBAGE DISPOSAL - METHODS - LOCATION - MILES FROM USE CENTER Continue to truck all trash and garbage to Mammoth Community dump as is presently being done. Seven miles maximum haul.

E. OTHER DEVELOPMENT NEEDS - ESTABLISHMENT SPECIAL AREAS, WITHDRAWALS, ETC.  
Withdraw from mineral entry - Crystal Crag Mammoth Rock - All sites on Mammoth Mountain Panorama Dome sites

Earthquake fault 302  
Indian Cave 83  
Minaret Vista 122  
Mammoth City 245

Mammoth Basin Vista 128  
Juniper Groves 129.5  
Sherwin Lakes Recreation zone  
Recreation Zone in Mammoth

Lakes Group

PAGE 5

R-5 - 2300-13

ISS. 6-62



A. Visitor Information Service Opportunities

2. Recommended V.I.S. Improvements

- Sawmill Ridge - Scenic Drive
  - Scenic Trail
  - Sawmill Ridge Vista site 126.5 - vegetation, geology and view
  - Old Jeffrey site 127.5 - vegetation and geology - Interpretive signing
  - Mammoth Basin Vista site 128 - geology and view
  - Fumarole site 129.5 - thermal activity - Interpretive signing
  - Hess Sawmill site 130 - logging history - Interpretive sign
- Chocolate Forest - Site 315
  - Nature trail and history of area name
- Indian Cave - Site 83
  - Archeological interpretation
  - Wildasin sawmill history interpretation
- Sherwin Lakes Juniper Grove - Site 342
  - Interpretation of aesthetic vegetation
- Sherwin Lakes - Interpretive signing explaining geology of basin including formation of lakes
- Sherwin Bowl Vista - Served by ski lift in winter and by hiking and riding trail in the summer
- Nature trail to TJ Lake
- Nature trail to Emerald Lake
- Crystal Lake - Nature trail to Lake
  - Mammoth Lakes overlook site 292.5
  - explain view and geology of Mammoth Lakes basin formation
- Twin Lakes Vista site 311
  - Explain view
- Pine City - Interpretive sign at site
- Lake Mary - Interpretive sign at site of Arrastra Mill
- Mammoth City - Site 245
  - Major historical interpretation of Mammoth Basin

Mill City - Site 339  
Historical interpretation of gold ore processing

Panorama Dome Trail - Nature and historical trail  
Panorama Dome site 338  
Explain view  
Old Mammoth vista site 337  
History of area in view  
Mammoth Falls site 336  
Explain geology and value of water

Hans Georg View - Site 335  
Explain view and ski pioneer who lived adjacent  
to this site

Mammoth Mountain Trail - Interpret natural features including Bottomless  
Pit and Dragons Back  
Seven Lakes Point site 334  
Explain view of Mammoth Lakes  
South Shoulder site 333  
Interpret view  
Summit site 332  
Interpret view

Minaret Summit - A geology loop trail from this point to the Inyo  
Craters by way of the Cinder Cone - site 331

Reds Lake - A geology nature trail to Reds Knob

Reds Knob - Site 344  
Explain view of Reds Meadow area

Mammoth Crest Vista - Site 368  
A magnificent view of Mammoth Lakes Basin and the  
Glass Mountain Range to the northeast - interpret

Amphitheatre - Site 349.5  
Horseshoe Lake  
This amphitheatre will serve the entire Mammoth  
Lakes Basin

Mammoth Creek Riding Trail - Interpret the natural features and plant life  
found along this day ride route



III. AREA DEVELOPMENT NEEDS - (CONT.)

**MAMMOTH LAKES**      **AREA PLAN**      **INYO**      **NATIONAL FOREST**

F. SITE DEVELOPMENT PROGRAM

NFRS SITE No.	SITE NAME (LIST BY CLASSES)	SITE ACRES		TYPE OF USE	PLANNED ACCESS	DEVELOPMENT ACRES			REMARKS
		F. S.	OTHER PUBLIC			ESTAB- LISHED	PLAN TO 1976	1976 TO 2000	
	<u>ESTABLISHED CAMPGROUNDS</u>								
10	Shady Rest	24		Camp		44			
159	Mammoth Creek	2		"		2			
1595	Upper Mammoth Creek	1		"		1			
225	Sherwin Creek	5		"		5			
85	Upper Sherwin	1		"		1			
160	Mill City	5		"		5			
161	Twin Lakes	36		"		36			
190	Coldwater	30		"		30			
215	Lake George	7		"		7			
216	West Lake Mary	18		"		18			
2165	East Lake Mary	15		"		15			
2175	Horseshoe Lake	15		"		15			
	<b>TOTAL</b>	179				179			
		159				159			

CONVERT TO PICNIC

GROUP USE

GROUP USE

NOTE: USE ADDITIONAL PAGES AS NEEDED. THIS TABLE IS  
NOT A SUBSTITUTE FOR TABLES 15 IN THE FOREST PLAN.

CHECK LIST  
POLICY CONSIDERATIONS FOR RECREATION AREAS

1. SPECIAL FEATURES OR CHARACTERISTICS OF THE ENTIRE AREA TO BE PRESERVED OR GIVEN SPECIAL CONSIDERATION IN THE OVERALL PROGRAM OF DEVELOPMENT AND USE

2. DEVELOPMENT POLICIES

A. CAMPING	PICNICKING	ROADSIDE ZONE
ORGANIZATION	SUMMER HOME	WATERFRONT ZONE
COMMERCIAL	OTHER	OTHER ZONES
WINTER SPORTS		UNUSUAL INTEREST AREAS

B. SPECIAL CONDITIONS TO BE OBSERVED IN USE OR DEVELOPMENT

C. LIMITATIONS - ON USE OR DEVELOPMENT

3. RESTRICTIONS

TIME LIMITS - SEASON OF USE  
VEHICULAR CROSS COUNTRY TRAVEL  
TRAILER HOME USE  
BOATING - WATER SKIING  
ROAD DEVELOPMENT  
POLLUTION CONTROL - SANITATION - GARBAGE DISPOSAL  
FIRE PREVENTION

4. CLASSIFICATION - WITHDRAWAL

MINERAL SURVEY - SURFACE RIGHTS  
E. O. WITHDRAWAL - AREA, EXTENT  
POWER WITHDRAWAL - ACTION - LIMITATIONS

5. ADJUSTMENTS - OR RESTRICTIONS

SPECIAL USES - POWER LINES - MINING CLAIMS  
OTHER USES - ROADS

NOTE: NEEDED ADJUSTMENTS WILL BE PROGRAMMED IN FRP TABLE 15E AND  
THE FUTURE USE WILL BE INDICATED ON THE AREA PLAN MAP.

6. SPECIAL

COORDINATION - NPS, STATE DIVISION OF BEACHES AND PARKS, COUNTIES,  
COUNTY ZONING CONSIDERATIONS



# AREA PLAN

INYO

# NATIONAL FOREST

MAMMOTH LAKES

III. AREA DEVELOPMENT NEEDS - (CONT.)

## F. SITE DEVELOPMENT PROGRAM

NFRS SITE No.	SITE NAME (LIST BY CLASSES)	SITE ACRES		TYPE OF USE	PLANNED ACCESS	DEVELOPMENT ACRES			REMARKS
		F. S.	OTHER PUBLIC	PRIV.		ESTAB- LISHED	PLAN TO 1976 TO 2000	AREA PRIORITY	
	<u>ESTABLISHED PICNIC</u>								
315	Chocolate Forest		5				5		
122	Minaret Vista		2				2		
217.6	Horseshoe Lake		2				2		
314	Twin Falls		2				2		
9.5	Mammoth Creek Crossing		1				1		
302.5	Earthquake Fault		1				1		
	<u>TOTAL</u>		<u>13</u>				<u>13</u>		

NOTE: USE ADDITIONAL PAGES AS NEEDED. THIS TABLE IS  
NOT A SUBSTITUTE FOR TABLES 15 IN THE FOREST PLAN.

MAMMOTH LAKES      AREA PLAN      INYO      NATIONAL FOREST

III. AREA DEVELOPMENT NEEDS - (CONT.)  
F. SITE DEVELOPMENT PROGRAM

NFRS SITE No.	SITE NAME (LIST BY CLASSES)	SITE ACRES			TYPE OF USE	PLANNED ACCESS	DEVELOPMENT ACRES			REMARKS
		F. S.	OTHER PUBLIC	PRIV.			ESTAB- LISHED	PLAN TO 1976	1976 TO 2000	AREA PRIORITY
	<b><u>ESTABLISHED COMMERCIAL</u></b>									
218	Mammoth Mountain Inn	20					20			
219	Woods Lodge	4					4			
220	Whites Lodge	5					5			
221	Tamarack Lodge	5					5			
222	Crystal Crag Lodge	8					8			
	<b>TOTAL</b>	42					42			
5	Manzanita Trailer Lodge	5					5			
162	Mammoth Lakes Pack	3					3			
163	Twin Lakes Boat Landing	1					1			
164	Willards Studio	1					1			
223	Lake George Boat Landing	1					1			
289	Lake Mary Store	1					1			
	<b>TOTAL</b>	12					12			

Relocate on site 162.5

NOTE: USE ADDITIONAL PAGES AS NEEDED. THIS TABLE IS  
NOT A SUBSTITUTE FOR TABLES 15 IN THE FOREST PLAN.



MAMMOTH LAKES										AREA PLAN		INYO		NATIONAL FOREST	
III. AREA DEVELOPMENT NEEDS - (CONT.)															
F. SITE DEVELOPMENT PROGRAM															
NFRS SITE No.	SITE NAME (LIST BY CLASSES)	SITE ACRES			TYPE OF USE	PLANNED ACCESS	DEVELOPMENT ACRES			REMARKS					
		F. S.	OTHER PUBLIC	PRIV.			ESTAB- LISHED	PLAN TO 1976	1976 TO 2000		AREA PRIORITY				
	<u>ESTABLISHED RESIDENCE TRACTS</u>														
8	Shady Rest	5			Res.		5						INLAND EXC B WATER FRONT		
9	Mammoth Ranger Station	3			"		3								
226	Sherwin Creek	1			"		1								
177	Lake George	3			"		3								
178	Falls Tract	6			"		6								
179	Twin Lakes	9			"		9								
180	Mill City	4			"		4								
224	Lake Mary	6			"		6								
	TOTAL	37					37								
	<u>WINTER SPORTS</u>														
98	Mammoth Mtn. N. Slope	2000			W.S.		1100	900							
	<u>Swimming</u>						997								
217.3	Horseshoe Lake	5					5								

NOTE: USE ADDITIONAL PAGES AS NEEDED. THIS TABLE IS  
NOT A SUBSTITUTE FOR TABLES 15 IN THE FOREST PLAN.

MAMMOTH LAKES		AREA PLAN	INYO	NATIONAL FOREST
---------------	--	-----------	------	-----------------

III. AREA DEVELOPMENT NEEDS - (CONT.)  
F. SITE DEVELOPMENT PROGRAM

NFRS SITE No.	SITE NAME (LIST BY CLASSES)	SITE ACRES			TYPE OF USE	PLANNED ACCESS	DEVELOPMENT ACRES			REMARKS
		F. S.	OTHER PUBLIC	PRIV.			ESTAB- LISHED	PLAN TO 1976 TO 2000	AREA PRIORITY	
	<u>ESTABLISHED ORGANIZATION</u>									
227	Los Angeles YMCA	18			Org.		18			
228	Harding Camp	5			"		5			
229	Voorhis Viking Camp	16			"		16			
230	Camp High Sierra	20			"		20			
	TOTAL	59					59			
	<u>OTHER ESTABLISHED USES</u>									
141	Mammoth Volunteer Fire Department	1			Public Service		1			
142	Mammoth Community Church	1					1			
1405	Mammoth Ranger Station	2			Adm.		2			

NOTE: USE ADDITIONAL PAGES AS NEEDED. THIS TABLE IS  
NOT A SUBSTITUTE FOR TABLES 15 IN THE FOREST PLAN.



**MAMMOTH LAKES**      **AREA PLAN**      **INYO**      **NATIONAL FOREST**

III. AREA DEVELOPMENT NEEDS - (CONT.)  
F. SITE DEVELOPMENT PROGRAM

NFRS SITE No.	SITE NAME (LIST BY CLASSES)	SITE ACRES		TYPE OF USE	PLANNED ACCESS	DEVELOPMENT ACRES			REMARKS
		F. S.	OTHER PUBLIC			ESTAB- LISHED	PLAN TO 1975 TO 2000	AREA PRIORITY	
	<u>ESTABLISHED OBSERVATION</u>								
335	Hans Georg View	1				1			
336	Mammoth Falls	1				1			
337	Old Mammoth View	1				1			
338	Panorama Dome	2				2			
334	Seven Lakes Point	1				1			
339	Mill City	2				2			
302	Earthquake Fault	64				64			
314-5	Twin Lakes Vista	2				2			
245	Old Mammoth	60				60			
83	Indian Cave	40				5	35		
140	Mammoth Visitor Center	20				5	15		
122.5	Minaret Vista	3				3			
	<b>TOTAL</b>	<b>197</b>				<b>147</b>	<b>50</b>		

NOTE: USE ADDITIONAL PAGES AS NEEDED. THIS TABLE IS  
NOT A SUBSTITUTE FOR TABLES 15 IN THE FOREST PLAN.

MANMOTH LAKES AREA PLAN INYO NATIONAL FOREST

III. AREA DEVELOPMENT NEEDS - (CONT.)

F. SITE DEVELOPMENT PROGRAM

NFRS SITE No.	SITE NAME (LIST BY CLASSES)	SITE ACRES		TYPE OF USE	PLANNED ACCESS	DEVELOPMENT ACRES			REMARKS
		F. S.	OTHER PUBLIC			ESTAB- LISHED	PLAN TO 1976	1976 TO 2000	
	<u>PLANNED CAMPGROUND</u>								
312	LAREVIEW PARK	20			ROAD		20		
369	Mammoth Pass	25			Trail		25		
90	Sherwin Lakes	4			27E02			4	Walk in group camp
85.5	Upper Sherwin Wilderness	6			4S18			6	Walk in camp
225.5	Sherwin Creek Exten.	50			4S08		50		Group use
84	Piute Pines	60			4S08		30		
82	Basalt Bluffs	20			3S09		20		
109	Pine City	30		5	FH81		35		
111	Homestead	10		80	FH81		90		Move pack station out of site
	TOTAL	200		85			205	40	Anticipate acquisition of put in sites 109 & 111
	<u>PLANNED ORGANIZATION</u>								
228.5	Sherwin Creek	35			Road		35		Expands existing site
343	Mammoth Community	40			Road		40		To serve needs of community

NOTE: USE ADDITIONAL PAGES AS NEEDED. THIS TABLE IS NOT A SUBSTITUTE FOR TABLES 15 IN THE FOREST PLAN.



III. AREA DEVELOPMENT NEEDS - (CONT.)  
F. SITE DEVELOPMENT PROGRAM

NFRS SITE No.	SITE NAME (LIST BY CLASSES)	SITE ACRES		TYPE OF USE	PLANNED ACCESS	DEVELOPMENT ACRES			REMARKS
		F. S. PUBLIC	OTHER PUBLIC			ESTAB- LISHED	PLAN TO 1976	1976 TO 2000	
	<u>PLANNED PICNIC</u>								
345	Reds Lake	10			Road		10		Contest mine claims
93	Cold Spring	3			Road			3	
292	Crystal Lake	4			Trail			4	
319	Barrett	2					2		
320	TJ Picnic	1						1	
321	Crag Picnic	10						10	
127	Old Jeffrey	2			Road		2	2	
129	Fumarole	2			Road				
126	Sawmill Ridge	2			Road		2	2	
83.5	Indian Cave	2			Road		2		
348	Lake Mamie			8			8		Anticipate acquisition in near future
349	East Horseshoe	1		9			9		
	TOTAL	39		17			33	22	
	<u>PLANNED COMMERCIAL</u>								
9.6	Windy Flat	5					5		

NOTE: USE ADDITIONAL PAGES AS NEEDED. THIS TABLE IS  
NOT A SUBSTITUTE FOR TABLES 15 IN THE FOREST PLAN.

III. AREA DEVELOPMENT NEEDS - (CONT.)  
F. SITE DEVELOPMENT PROGRAM

NFRS SITE No.	SITE NAME (LIST BY CLASSES)	SITE ACRES		TYPE OF USE	PLANNED ACCESS	DEVELOPMENT ACRES			REMARKS
		F. S.	OTHER PUBLIC			ESTAB- LISHED	PLAN TO 1976	1976 TO 2000	
	<u>PLANNED</u> <u>WINTER SPORTS</u>								
87	Sherwin Bowl	2500			3S10			2500	Primarily snow play Snow play
125	Chinquapin Hill	150			3S08		30	150	
370	Horseshoe Lake	30						—	
	TOTAL	2680						2650	
	<u>RESERVE SITES</u>								
132	Golden Mantle	30							On City of Los Angeles
139	Pine Scent	35							
82.5	Basalt Bluffs	20							
131	Hess Mill	60							
133	Peaceful Ridge	50							
134	Big Flat	60							
84.5	Piute Pines		75		Winter Sports				
86	Viking Slope	75							
10.5	Shady Rest	30	—						
	TOTAL	360	75						

NOTE: USE ADDITIONAL PAGES AS NEEDED, THIS TABLE IS  
NOT A SUBSTITUTE FOR TABLES 15 IN THE FOREST PLAN.



MAMMOTH LAKES AREA PLAN INYO NATIONAL FOREST

III. AREA DEVELOPMENT NEEDS - (CONT.)  
F. SITE DEVELOPMENT PROGRAM

NFRS SITE No.	SITE NAME (LIST BY CLASSES)	SITE ACRES		TYPE OF USE	PLANNED ACCESS	DEVELOPMENT ACRES			REMARKS
		F. S.	OTHER PUBLIC			ESTAB- LISHED	PLAN TO 1976	1976 TO 2000	
	PLANNED OBSERVATION								
344	REDS KNOB	1			TRAIL		1		
332	Mammoth Mtn. Summit	1			Trail		1		
333	South Shoulder	1			Trail		1		
334	Seven Lakes Point	1			Trail		1		
2925	Mammoth Lakes Overlook	1			Trail		1		
341	Sherwin Bowl Vista	1			Trail		1		
1295	Fumarole	5			Road		5		
130	Hess Mill	2			Road		2		
128	Mammoth Basin Vista	5			Road & Trail		5		
1275	Old Jeffrey	5			Road & Trail		5		
1265	Sawmill Ridge Vista	2			Road & Trail		2		
368	MAMMOTH CREST VISTA	1			TRAIL		1		
	TOTAL	25					25		
		26					26		

NOTE: USE ADDITIONAL PAGES AS NEEDED. THIS TABLE IS  
NOT A SUBSTITUTE FOR TABLES 15 IN THE FOREST PLAN.

## IV. SITE AND AREA MANAGEMENT POLICIES (FSH 2313.21)

## A. DEVELOPMENT POLICIES

## 1. SPECIAL FEATURES OF AREA TO BE PRESERVED

This is a highly complex area with mushrooming growth. There is a continuing need for coordination of all developments including roads, trails, power lines, water systems, sewer systems, parking lots, schools, resorts and residences. All of these developments need constant supervision and coordination to prevent unnecessary destruction of the natural beauty of the mountain environment.

The cool scenic environment provided by the lakes, streams, mountains and vegetative cover will be protected and enhanced to keep the area as natural looking as is practical.

The area contains both geological and botanical features that will be preserved. The many aesthetic weather deformed Limber and Whitebark pines both dead and alive along the Mammoth Crest, on Mammoth Mountain, at Minaret Summit and in the Sherwin Bowl will be protected from removal wherever possible. The Sierra Juniper stand southeast of the Sherwin Lakes along the Valentine Lake trail will be protected. The fall colors are a widely publicized tourist attraction in the area and all Aspen trees both individuals and stands will be protected insofar as is practical when planning and carrying out improvement programs. The Aspens along Mammoth Creek, Laurel Creek and Sherwin Creek are of particular interest.

Geological features are numerous in the area. Those that will receive special protection include the Earthquake Fault site 302, the Fumaroles site 129.5, Crystal Crag, the Dragons Back, the Bottomless Pit and Mammoth Rock are all geological features that attract much attention in the area and will be protected from defacement and removal.

The area is rich in mine history, dating back to the 1870's. The few remaining features of this era will receive protection from removal or vandalism. These include the large flywheel at Mill City site 339 and the remnants of buildings at the site of Mammoth City site 345.

## 2. DEVELOPMENT POLICIES

A camping complex will be developed on Lower Sherwin Creek. Organizations will be continued on the sites presently in use at Sherwin Creek. The facilities at site 229 Voorhis Viking camp could possibly serve as a skier warming lodge in the winter in the event site 86 Viking slope is developed. The Forest will remain alert to the needs for additional commercial development on National Forest land. The expansion of the Mammoth Community on private land will probably meet most of the future needs for commercial development. Site 343 is a 40-acre parcel in the center of the private land that will be retained in National Forest ownership and developed by the county and community under permit for public purposes to serve the needs of the community.



The possibility of relocating of Mammoth Pack Station, site 162, to the east side of the Mammoth Lakes Highway will eliminate the necessity of crossing the highway to reach the Duck Pass trail, which is the principal area served by the packer. This will remove the use from its proximity to a tributary stream of Mammoth Creek and its location within campsite 109.

Winter sports development of Mammoth Mountain, site 98, will reach its ultimate development in approximately ten years. The current use figures indicate the need for further facilities, a prospectus will be issued by 1976 for the development of Sherwin Bowl, site 87, to the south of Mammoth Village. Two winter sports sites suitable for development for family group skiing and snow play exist - Chinquapin Hill, site 125, is suitable for early development as a complement to Mammoth Mountain. The second, site 86, Viking Slope is placed in the reserve category, but could be developed in the distant future as a complement to Sherwin Bowl, site 87.

A cross country ski trail will be laid out with distinctive route markers in the vicinity of Mammoth Village on a trial basis. If the demand increases, additional trails will be located and marked. Possible locations for trails include - Mammoth Village to Sherwin Lakes, Mammoth Village to Sawmill Ridge, Mammoth Village to Mammoth Creek, Mammoth Village to Panorama Dome, Mammoth Village to Mammoth Lakes, Mammoth Village to Minaret Summit. The Mammoth Visitor Center could serve as a starting point for a system of cross country ski trails. A diagrammatic hand out map will be prepared to indicate the cross country ski routes and features of interest along the route.

Picnicking facilities will be provided at most of the major points of interest.

With the growth and development of the Mammoth Community sufficient private land is available to meet all residence demands. Summer homes in the west portion of Twin Lakes tract, site 179, have been placed on tenure where they are in conflict with the west Twin Lakes campground. The summer homes along Mammoth Creek, site 9, are also being placed on tenure when the permit is transferred, this will free the stream for public access and picnicking when all homes have been removed.

The lone summer home at site 226.5 the Sherwin Creek tract, will be placed on tenure to remove it and free the site for use as a road head for the Valentine Lake trail. The three homes on site 226, will be removed by tenure to free the streamside zone.

The Shady Rest tract, site 8, is within the land exchange boundary and conversion to private title in the near future is contemplated.

When no longer necessary for administration of the District, the buildings at the Old Mammoth Ranger Station will be removed to free Mammoth Creek access and to make the site available for picnicking.

In the vicinity of Mammoth Crest, the area has been zoned broadly to protect the scenic backdrop.

A two wheel mechanized vehicle trail is proposed to link the Pappas Mine road on Sherwin Creek with the Laurel Creek Mine road. This trail will serve the campground at site 90. Two wheel motorized vehicles will not be allowed to use the established Sherwin Lakes or Valentine Lakes trails, these will be retained for foot and horse travel only. A loop riding trail will be constructed in the Mammoth Creek area to meet the increased demands for day horseback riding. Vehicles will be restricted from using the upper portion of the Laurel Creek Mine road from the standpoint of public safety. The numerous roads on the ridge to the north of Mammoth Village will be designated for two wheel vehicle travel, however, four wheel vehicles will not be excluded. A mechanized vehicle trail will link Mammoth Village with Minaret Vista and the Dry Creek road. A majority of the mechanized vehicle routes are adaptable to winter use with motorized snow sleds. A diagrammatic hand out map, indicating summer and winter motorized vehicle routes will be prepared.

### 3. RESTRICTIONS

A fourteen day camping limit is enforced during the period June 1 to September 15.

Vehicular travel will be restricted to the established roadways, or designated trails. A loop road will be constructed to pass between Lake Mamie and Horseshoe Lake to eliminate the dead end at Horseshoe Lake.

A twenty-two foot limit is maintained on trailer use of campgrounds. Larger trailers are directed to the commercial trailer courts.

Water skiing is prohibited on all the lakes in the area. They are not large enough for this use. Water skiers are directed to Walker Lake in Nevada.

Motor boats are prohibited on Horseshoe Lake and Twin Lakes. Lakes on which motor boats are allowed are Lake Mary, Lake George, and Lake Mamie. Motor boat speed is restricted to ten miles per hour.

Roads will not be constructed to Crystal Lake, Barrett Lake, TJ Lake, or the Sherwin Lakes. The truck trail serving the McLeod Lake water line will continue to be closed to the public.

There is a constant need to prevent pollution of all waters in the area. With the Mammoth Village growth there is an ever increasing demand on the limited water supplies in the area. Twin Lakes is the intake for the Mammoth Community water system. McLeod Lake serves as a reservoir for the residences in Falls tract, Whites Lodge, Lake Mary campground and Horseshoe Lake group camps. Many of the small streams and springs are utilized by residences or campgrounds.



Site construction in the eastern half of the area will have consideration given to the concentrations of heavy sage cover. Fire breaks will be constructed around all sites and units will have fuel removed. These precautions will be utilized to prevent the spread of wildfire into or out of the sites.

#### 4. CLASSIFICATION - WITHDRAWAL

A mineral survey and surface rights determination was completed in 1963.

Shady Rest administrative site withdrawal dated 9/4/36 covers 120 acres in NW $\frac{1}{4}$  Sec. 35 T3S R27E.

Old Mammoth Ranger Station administrative site withdrawal covers 60 acres in NW $\frac{1}{4}$  Sec. 2 T4S R27E.

Recreation area withdrawal under Regulation U3-b dated 4/19/49 covers 180 acres at Horseshoe Lake in Sec. 8 & 17 T4S R27E.

There are no power withdrawals in the area. (See history)

#### 5. ADJUSTMENTS - OR RESTRICTIONS

##### Special Uses -

The Mammoth Pack Station should be moved to the east of the Mammoth Lakes Highway to eliminate an unsafe stock crossing.

Underground location of any new power lines will be given consideration when any permit is issued. The power company will be encouraged to place lines underground whenever a power line relocation is being considered.

The Heart Lake trail will be relocated away from the road to the Mammoth Consolidated mine. The trail will be relocated to originate from the Duck Lake trail in the John Muir Wilderness.

There is a proposal under study to construct a state highway over Minaret Summit in the northwest corner of the area. If constructed, this road would have a tremendous impact on use in the area by giving direct access from the San Joaquin Valley communities to the west.

MAMMOTH LAKES  
RECREATION AREA

---



Southeast over Mammoth Village  
To Sherwin Lakes Basin

---



West over area to Mammoth Mountain





Mammoth Lakes Basin  
Lake Mary and Mammoth Mountain



Mammoth Lakes Basin  
TJ Lake lower right Lake Mary in center



Sawmill Ridge scenic trail  
Site 129.5 in center

---



Site 128 view to Sherwin Bowl  
Upper right distance





On Sawmill Ridge scenic drive



Site 127.5 - Sawmill Ridge



Site 83



Site 9 in center





Site 84 right center  
Sites 227, 228, 340 left center



Site 159 lower right center  
Site 83 on left



Shady Rest site 10



Minaret Road and  
Mammoth Village





Mammoth Mountain site 98



Mammoth Mountain east slope  
Panorama Dome lower left



Lake Mary and Crystal Crag



Mammoth Mountain site 98 and 218





Sherwin Bowl  
View north from site 341



Sherwin Bowl  
Site 341 on peak



Site 87 - Sherwin Bowl



# Sites Sheet 1

98 221 332  
122 230 333  
122.5 302 334  
160 302.5 335  
179 331 336  
180 337  
218 338  
339

# Sites Sheet 3

5 82 84.5 126.5 130 225  
8 82.5 85 127 131 225.5  
9 83 93 127.5 132 226  
9.5 83.5 125 128 133 226.5  
10 84 126 129 133.5 227  
10.6 129.5 134 228  
10.7 134.5 229  
139 315  
139.5 315.5  
140 340  
140.5  
141  
142  
159  
159.5

3

3A

2

1

# Sites Sheet 2

87 178 217.3 289 320  
90 178.5 217.5 292 321  
109 179 219 292.5 341  
111 190 220 292.6  
161 190.5 221 311  
162 215 222 312  
163 216 223 314  
164 216.5 224 319  
177 217 245 319.5

# Sites Sheet 3a

82.5 93  
90 342



