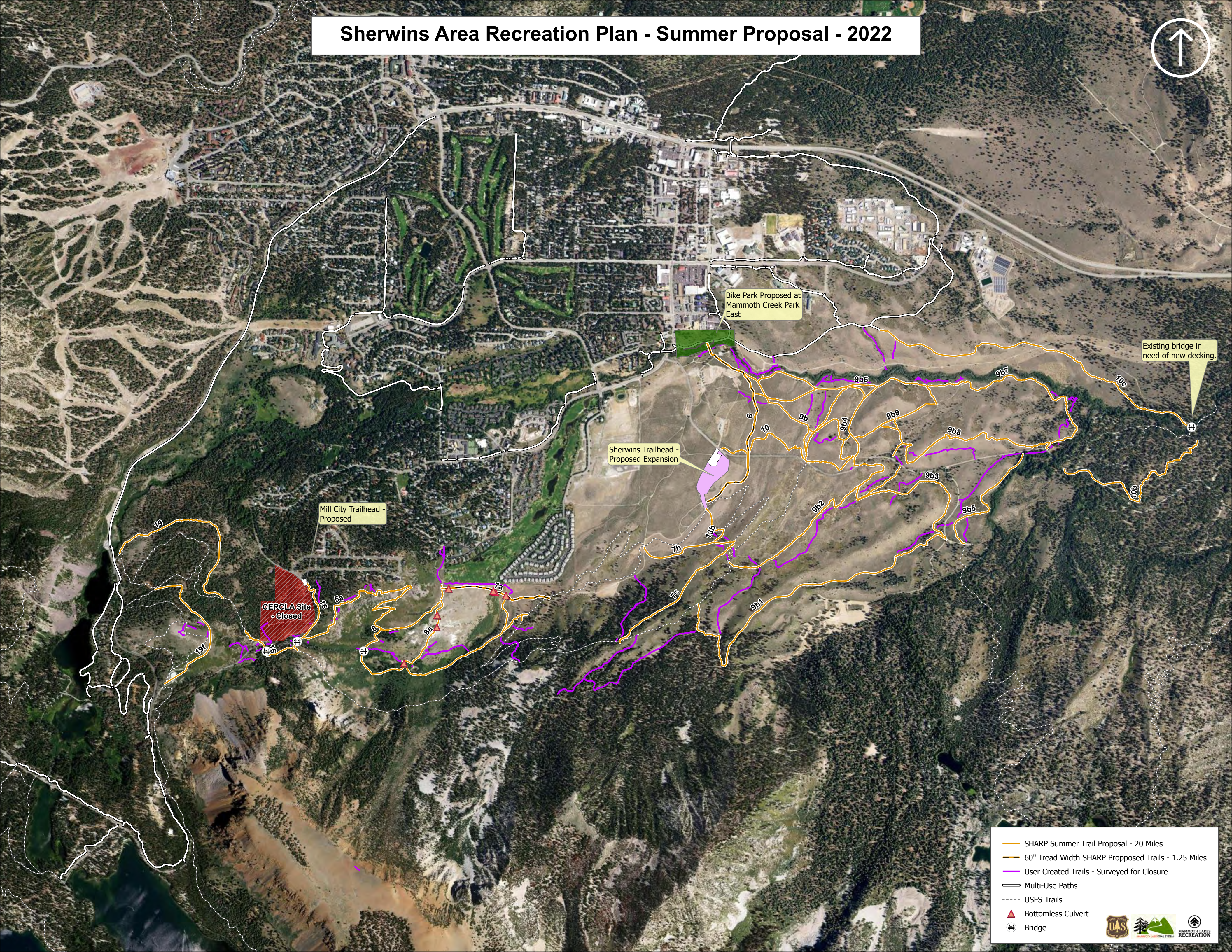


Sherwins Area Recreation Plan - Summer Proposal - 2022



CERCLA Site - Closed

Mill City Trailhead - Proposed

Sherwins Trailhead - Proposed Expansion

Bike Park Proposed at Mammoth Creek Park East

Existing bridge in need of new decking.

- SHARP Summer Trail Proposal - 20 Miles
- 60" Tread Width SHARP Proposed Trails - 1.25 Miles
- User Created Trails - Surveyed for Closure
- Multi-Use Paths
- USFS Trails
- Bottomless Culvert
- Bridge